

CITY OF EAGLE LAKE, TEXAS
Annual Financial Report
For the Year Ended September 30, 2016

**CITY OF EAGLE LAKE, TEXAS
COMPREHENSIVE ANNUAL FINANCIAL REPORT
FOR THE YEAR ENDED SEPTEMBER 30, 2016**

TABLE OF CONTENTS

INTRODUCTORY SECTION	<u>Page</u>
Letter of Transmittal	1
Organizational Chart	4
List of Principal Officials	5
 FINANCIAL SECTION	
Independent Auditor's Report	6
Management's Discussion and Analysis	9
 Basic Financial Statements:	
<u>Government-Wide Statements:</u>	
Statement of Net Position	17
Statement of Activities	18
 <u>Governmental Fund Financial Statements:</u>	
Balance Sheet	19
Reconciliation of the Governmental Funds Balance Sheet to the Statement of Net Position	20
Statement of Revenues, Expenditures and Changes in Fund Balance	21
Reconciliation of the Governmental Funds Statement of Revenues, Expenditures and Changes in Fund Balances to the Statement of Activities	22
 <u>Proprietary Fund Statements</u>	
Statement of Net Position	23
Statement of Revenues, Expenses and Changes in Fund Net Position	25
Statement of Cash Flows	26
 Notes to the Financial Statements	28
 Required Supplementary Information	
Statement of Revenues, Expenditures and Changes in Fund Balance- Budget and Actual-General Fund	44
Statement of Revenues, Expenditures and Changes in Fund Balance- Budget and Actual-Contingency Special Revenue Fund	46
Schedule of City's Proportionate Share of the Net Pension Liability- Texas Municipal Retirement System (TMRS)	47
Schedule of City's Contributions Texas Municipal Retirement System	48
Notes to Required Supplementary Information	49

Combining and Individual Fund Statements:

Combining Balance Sheet – Non-Major Governmental Funds	50
Combining Statement of Revenues, Expenditures, and Changes in Fund Balances – Non-Major Governmental Funds	51

Statements of Revenues, Expenditures and Changes in Fund Balances-Budget and Actual:

Nonmajor Governmental Funds	52
Debt Service Fund	54

Statements of Revenues, Expenditures and Changes in Fund Balances-Budget and Actual-From Inception:

Airport Construction Capital Project Fund	55
---	----

Other Information Required by GAO

Report on Compliance and on Internal Control over Financial Reporting Based on an Audit of Financial Statements Performed in Accordance With <i>Governmental Auditing Standards</i>	56
---	----

INTRODUCTORY SECTION

This page left blank intentionally.



CITY OF EAGLE LAKE

P.O. Box 38
Eagle Lake, Texas 77434

(979) 234-2640
Fax (979) 234-3255

March 20, 2017

To the Honorable Mayor, Members of the City Council, and Citizens
of the City of Eagle Lake, Texas

State law requires that the City of Eagle Lake publish at the close of each fiscal year a complete set of financial statements presented in conformity with generally accepted accounting principles (GAAP) and audited in accordance with generally accepted auditing standards by a firm of licensed certified public accountants. Pursuant to that requirement, we hereby issue the comprehensive annual financial report of the City of Eagle Lake for the fiscal year ended September 30, 2016.

This report consists of management's representation concerning the finances of the City of Eagle Lake. Consequently, management assumes full responsibility for the completeness and reliability of all the information presented in this report.

Management of the City of Eagle Lake has established a comprehensive internal control framework that is designed to compile sufficient reliable information for the preparation of the City of Eagle Lake's financial statements in conformity with GAAP. Because the cost of internal controls should not outweigh their benefits, the City of Eagle Lake's comprehensive framework of internal controls has been designed to provide reasonable rather than absolute assurance that the financial statements will be free from material misstatements.

The City of Eagle Lake's financial statements have been audited by Trlicek & Co., P.C., Certified Public Accountants. The independent auditor has issued an unqualified ("clean") opinion on the City of Eagle Lake's financial statements for the fiscal year ended September 30, 2016. The independent auditor's report is presented as the first component of the financial section of this report.

GAAP requires that management provide a narrative introduction, overview, and analysis to accompany the basic financial statements in the form of Management Discussion and Analysis. This letter of transmittal is designed to complement MD&A and should be read in conjunction with it. The City of Eagle Lake's MD&A can be found immediately following the independent auditor's report.

Profile of the City

The City of Eagle Lake, incorporated in 1888, is located in the southeastern part of the state. The City currently has a land area of 2.65 square miles and a population of 3,664. The City is empowered to levy a property tax on both real and personal property located within its boundaries. The City has operated under the council-manager form of government since 1952.

Policy making and legislative authority are vested in the City Council, which consists of a mayor and five council members. The council is elected at large on a non-partisan basis to two-year staggered terms. The City Council is responsible, among other things, for passing ordinances, adopting the budget, appointing committees and hiring the City's manager. The city manager is responsible for carrying out the policies and the ordinances of the City Council, for overseeing the day-to-day operations of the City, and, with the advice of the City Council, appointing and removing all department heads.

The annual budget serves as the foundation for the City of Eagle Lake's financial planning and control. The budget is prepared by fund, function, and department. The city manager is authorized to transfer budgeted amounts between departments within any fund, however, any revisions that alter the total expenditures of any fund must be approved by the City Council.

Local economy

The City's region has an economic base that includes agriculture/agribusiness (mostly rice), gravel mining, materials transporting, retail and wholesale trade, and selected services. Local indicators point to continued economic stability. The region (which includes the City, two other incorporated cities and the unincorporated area within the county) has an unemployment rate of 5.6% compared to the state's average rate of 4.7% and the national average of 4.9%. The region has an employed labor force of approximately 11,830.

Long-term financing

The City currently has one outstanding certificate of obligation issue:

During fiscal year ended September 30, 2012, the City issued \$2,005,000 Limited Tax Refunding Bonds, Series 2012 for the refunding of the Series 1993, 1997 and 2003 Certificates of Obligation Bonds. The refunding was undertaken to reduce total future debt service payments. The transaction resulted in a reduction of \$190,987 in future debt service payments. The bonds have an interest rate of 2.17% and maturity of March 1, 2023. Interest is payable semiannually on March 1 and September 1. The outstanding balance at September 30, 2016 was \$1,250,000.

Acknowledgements

All members of the administration are to be commended for their contribution to the preparation of this report.

Respectfully submitted,

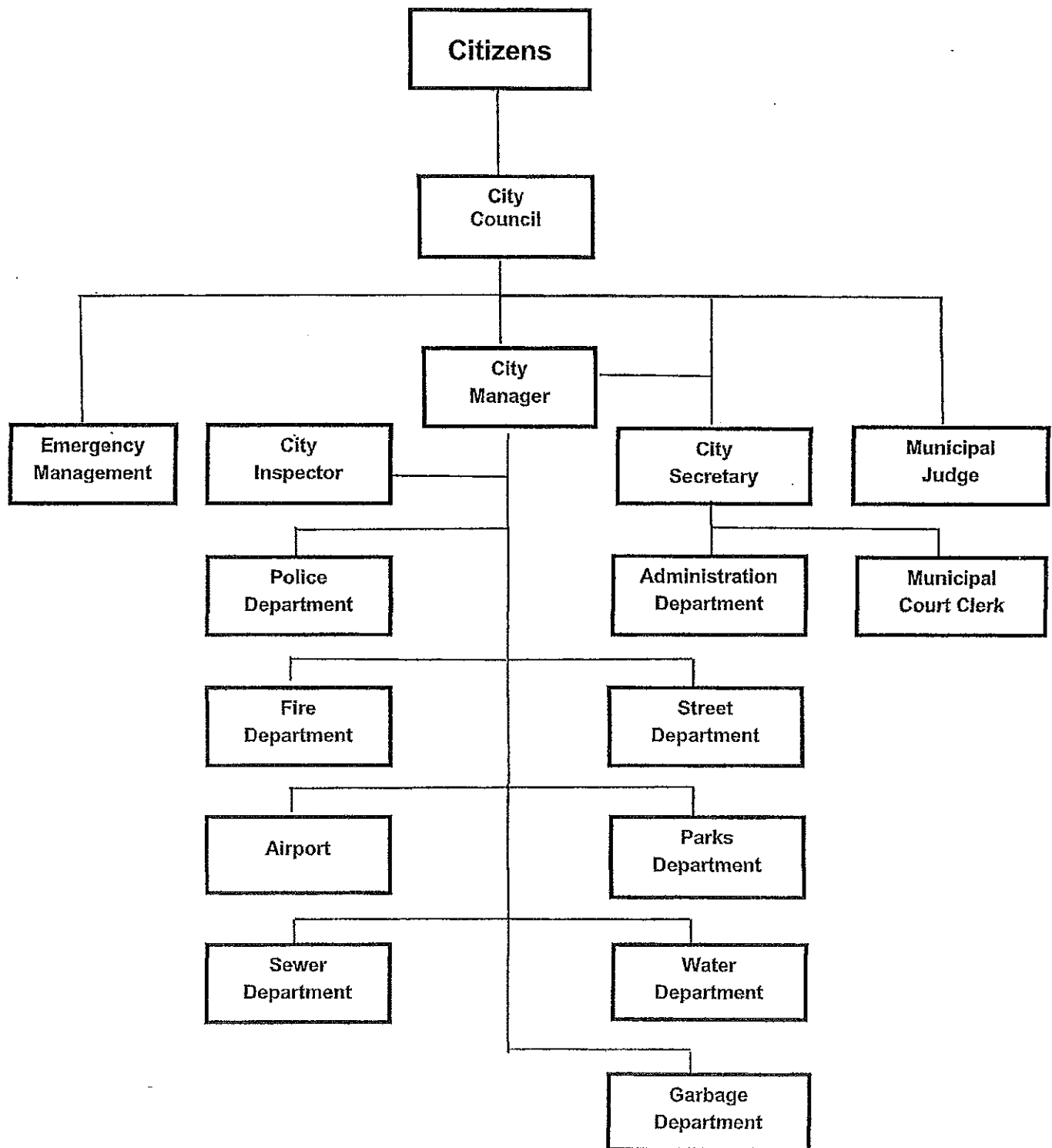
A handwritten signature in cursive script that reads "Lina Ferguson". The signature is written in black ink and is positioned above the printed name and title.

Lina Ferguson
City Secretary

This page left blank intentionally.

CITY OF EAGLE LAKE

ORGANIZATIONAL CHART



This page left blank intentionally.

**CITY OF EAGLE LAKE, TEXAS
LIST OF PRINCIPAL OFFICIALS
SEPTEMBER 30, 2016**

<u>Title</u>	<u>Name</u>
<u>Elected Officials</u>	
Mayor	Mary Parr
Alderman	John Young (1)
Alderman	Alex Ramirez, Jr.
Alderman	Benny Landrum
Alderman	Michael Cooper
Alderman	Tony Tyler
<u>Appointed Officials</u>	
City Manager	Sylvia Rucka
City Secretary/Director of Finance	Lina Ferguson
Chief of Police	David Freeman
Public Works Director	Dan Clark
Fire Chief	Darrell Stancik
Municipal Judge	Stan Warfield
City Attorney	Donald Bendy
Fire Marshall	Todd Mascheck
Code Enforcement Officer	Victor Shimek
(1) Mayor Pro-tem	

This page left blank intentionally.

FINANCIAL SECTION

This page left blank intentionally.



TRLICEK & CO., P.C.

Certified Public Accountants

113 W. Colorado St.

P.O. Box 817

La Grange, TX 78945

(979) 968-9635

INDEPENDENT AUDITOR'S REPORT

To the City Council
City of Eagle Lake, Texas

We have audited the accompanying financial statements of the governmental activities, the business-type activities, the aggregate discretely presented component units, each major fund, and the aggregate remaining fund information of the City of Eagle Lake, Texas as of and for the year ended September 30, 2016, which collectively comprise the City's basic financial statements as listed in the table of contents, and the related notes to the financial statements.

Management's Responsibility for the Financial Statements

Management is responsible for the preparation and fair presentation of these financial statements in accordance with accounting principles generally accepted in the United States of America; this includes the design, implementation, and maintenance of internal control relevant to the preparation and fair presentation of financial statements that are free from material misstatement, whether due to fraud or error.

Auditor's Responsibility

Our responsibility is to express opinions on these financial statements based on our audit. We conducted our audit in accordance with auditing standards generally accepted in the United States of America. Those standards require that we plan and perform the audit to obtain reasonable assurance about whether the financial statements are free of material misstatement.

An audit involves performing procedures to obtain audit evidence about the amounts and disclosures in the financial statements. The procedures selected depend on the auditor's judgment, including the assessment of the risks of material misstatement of the financial statements, whether due to fraud or error. In making those risk assessments, the auditor considers internal control relevant to the entity's preparation and fair presentation of the financial statements in order to design audit procedures that are appropriate in the circumstances, but not for the purpose of expressing an opinion on the effectiveness of the entity's internal control. Accordingly, we express no such opinion. An audit also includes evaluating the appropriateness of accounting policies used and the reasonableness of significant accounting estimates made by management, as well as evaluating the overall presentation of the financial statements.

We believe that the audit evidence we have obtained is sufficient and appropriate to provide a basis for our audit opinion.

Opinion

In our opinion, the financial statements referred to above present fairly, in all material respects, the respective financial position of the governmental activities, the business-type activities, the aggregate discretely presented component units, each major fund, and the aggregate remaining fund information of the City of Eagle Lake, Texas as of September 30, 2016, and the respective changes in financial position and, where applicable, cash flows thereof for the year then ended in accordance with accounting principles generally accepted in the United States of America.

Emphasis of Matter

Change in Accounting Principle

As described in Note A to the financial statements, in 2016, the City of Eagle Lake adopted new accounting guidance, Government Accounting Standards Board (GASB) Statement No. 68, Accounting and Financial Reporting for Pensions, and GASB Statement No. 71, Pension Transition for contributions made Subsequent to the Measurement Date—an amendment of GASB Statement No. 68. Our opinion is not modified with respect to this matter.

Other-Matters

Accounting principles generally accepted in the United States of America require that the management's discussion and analysis and budgetary comparison information on pages 9 through 16 and 44 through 46 be presented to supplement the basic financial statements. Such information, although not a part of the basic financial statements, is required by the Governmental Accounting Standards Board, who considers it to be an essential part of financial reporting for placing the basic financial statements in an appropriate operational, economic, or historical context. We have applied certain limited procedures to the required supplementary information in accordance with auditing standards generally accepted in the United States of America, which consisted of inquiries of management about the methods of preparing the information and comparing the information for consistency with management's responses to our inquiries, the basic financial statements, and other knowledge we obtained during our audit of the basic financial statements. We do not express an opinion or provide any assurance on the information because the limited procedures do not provide us with sufficient evidence to express an opinion or provide any assurance.

Our audit was conducted for the purpose of forming opinions on the financial statements that collectively comprise the City of Eagle Lake Texas's financial statements as a whole. The introductory section, combining and individual nonmajor fund financial statements are presented for purposes of additional analysis and are not a required part of the financial statements. The combining and individual nonmajor fund financial statements are the responsibility of management and were derived from and relate directly to the underlying accounting and other records used to prepare the financial statements. The information has been subjected to the auditing procedures applied in the audit of the financial statements and certain additional procedures, including comparing and reconciling such information directly to the underlying accounting and other records used to prepare the financial statements or to the financial statements themselves, and other additional procedures in accordance with auditing standards generally accepted in the United States of America. In our opinion, the information is fairly stated in all material respects in relation to the financial statements as a whole. The introductory section has not been subjected to the auditing procedures applied in the audit of the basic financial statements and, accordingly, we do not express an opinion or provide any assurance on them.

Other Reporting Required by Government Auditing Standards

In accordance with Government Auditing Standards, we have also issued our report dated March 20, 2017 on our consideration of the City of Eagle Lake's internal control over financial reporting and on our tests of its compliance with certain provisions of laws, regulations, contracts, and grant agreements and other matters. The purpose of that report is to describe the scope of our testing of internal control over financial reporting and compliance and the results of that testing, and not to provide an opinion on internal control over financial reporting or on compliance. That report is an integral part of an audit performed in accordance with Government Auditing Standards in considering the City of Eagle Lake's internal control over financial reporting and compliance.

Respectfully submitted,

Trlicek & Co., P.C.

Trlicek & Co., P.C.

La Grange, Texas
March 20, 2017

This page left blank intentionally.

**CITY OF EAGLE LAKE, TEXAS
MANAGEMENT'S DISCUSSION AND ANALYSIS
FOR THE YEAR ENDED SEPTEMBER 30, 2016**

As management of the City of Eagle Lake, we offer readers of the City of Eagle Lake's financial statements this narrative overview and analysis of the financial activities of the City of Eagle Lake for the fiscal year ended September 30, 2016. We encourage readers to consider the information presented here in conjunction with additional information that we have furnished in our letter of transmittal, which can be found on pages 1-3 of this report.

Financial Highlights

- The assets of the City of Eagle Lake exceeded its liabilities at the close of the most recent fiscal year by \$7,063,350 (net position). Of this amount, \$2,194,442 (unrestricted net position) may be used to meet the government's ongoing obligations to citizens and creditors.
- The government's total net position decreased by \$321,556. Net position of governmental activities decreased \$208,090 while business-type activities decreased \$113,466. These changes are discussed further on the following pages.
- As of the close of the current fiscal year, the City of Eagle Lake's governmental funds reported combined ending fund balances of \$1,119,323, an increase of \$144,734 in comparison with the prior year. Approximately 78% of this total amount, \$868,515, is available for spending at the City's discretion (unreserved fund balance).
- At the end of the current fiscal year, unreserved fund balance for the general fund was \$443,801 or 26% of total general fund expenditures.
- The City of Eagle Lake's total debt decreased by \$111,516 (7%) during the current fiscal year. Principal payments of \$264,533 were made. The remaining increase of \$153,017 is the increase in capitalized leases and compensated absences payable.

Overview of the Financial Statements

This discussion and analysis is intended to serve as an introduction to the City of Eagle Lake's basic financial statements. The City of Eagle Lake's basic financial statements are comprised of three components: 1) government-wide financial statements, 2) fund financial statements, and 3) notes to the financial statements. This report also contains other supplementary information in addition to the basic financial statements.

Government-wide financial statements. The *government-wide financial statements* are designed to provide readers with a broad overview of the City of Eagle Lake's finances, in a manner similar to a private-sector business.

The *statement of net position* presents information on all of the City of Eagle Lake's assets and liabilities, with the difference between the two reported as net position. Over time, increases or decreases in net position may serve as a useful indicator of whether the financial position of the City of Eagle Lake is improving or deteriorating.

The *statement of activities* presents information showing how the City's net position changed during the most recent fiscal year. All changes in net position are reported as soon as the underlying event giving rise to the change occurs, *regardless of the timing of related cash flows*. Thus, revenues and expenses are reported in this statement for some items that will only result in cash flows in future fiscal periods (e.g., uncollected taxes and earned but unused vacation leave).

Both of the government-wide financial statements distinguish functions of the City of Eagle Lake that are principally supported by taxes and intergovernmental revenues (*governmental activities*) from other functions that are intended to recover all or a significant portion of their costs through user fees and charges (*business-type activities*). The governmental activities of the City of Eagle Lake include general government, public safety (police and fire), streets and drainage, economic development, airport and parks and recreation. The business-type activities of the City of Eagle Lake include utility services of water, sewer and garbage.

The government-wide financial statements include only the City of Eagle Lake. The City of Eagle Lake has no component units.

The government-wide financial statements can be found on pages 17 and 18 of this report.

Fund financial statements. A fund is a grouping of related accounts that is used to maintain control over resources that have been segregated for specific activities or objectives. The City of Eagle Lake, like other state and local governments, uses fund accounting to ensure and demonstrate compliance with finance-related legal requirements. All of the funds of the City can be divided into two categories: governmental funds and proprietary funds.

Governmental funds. *Governmental funds* are used to account for essentially the same functions reported as *governmental activities* in the government-wide financial statements. However, unlike the government-wide financial statements, governmental financial statements focus on *near-term inflow and outflows of spendable resources*, as well as on *balances of spendable resources* available at the end of the fiscal year. Such information may be useful in evaluating a government's near-term financing requirements.

Because the focus of governmental funds is narrower than that of the government-wide financial statements, it is useful to compare the information presented for *governmental funds* with similar information presented for *governmental activities* in the government-wide financial statements. By doing so, readers may better understand the long-term impact of the government's near-term financing decisions. Both the governmental fund balance sheet and the governmental fund statement of revenues, expenditures, and changes in fund balances provide a reconciliation to facilitate this comparison between *governmental funds* and *governmental activities*.

The City of Eagle Lake maintains six individual governmental funds. Information is presented separately in the governmental fund balance sheet and in the governmental fund statement of revenues, expenditures, and changes in fund balances for the general fund, contingency special revenue fund, debt service fund and a capital project fund, each of which are considered to be major funds. Data from the other two governmental funds are combined into a single, aggregated presentation. Individual fund data for each of these nonmajor governmental funds is provided in the form of *combining statements* elsewhere in this report.

The basic governmental fund financial statements can be found on pages 19 and 21 of this report.

Proprietary funds. The City of Eagle Lake maintains one type of proprietary fund. *Enterprise funds* are used to report the same functions presented as *business-type activities* in the government-wide financial statements. The City of Eagle Lake uses enterprise funds to account for its utility services of water, sewer and garbage and a dormant gas service activity.

Proprietary funds provide the same type of information as the government-wide financial statements, only in more detail. The proprietary fund financial statements provide separate information for both the aforementioned utility services. The Utility fund is considered to be a major fund of the City of Eagle Lake.

The basic proprietary fund financial statements can be found on pages 23-27 of this report.

Notes to the financial statements. The notes provide additional information that is essential to a full understanding of the data provided in the government-wide and fund financial statements. The notes to the financial statements can be found on pages 28-43 of this report.

Other information. In addition to the basic financial statements and accompanying notes, this report also presents certain *required supplementary information (RSI)* concerning the City of Eagle Lake's progress in funding its obligation to provide pension benefits to its employees. Schedules comparing actual results with the original budget and the final amended budget for the City's General Fund and its Contingency Special Revenue Fund (a major fund) are also presented in the RSI section. RSI can be found on pages 44-49 of this report.

The combining statements referred to earlier in connection with nonmajor governmental funds are presented immediately following the required supplementary. Combining and individual fund statements and schedules can be found on pages 50-55 of this report.

Government-wide Financial Analysis

As noted earlier, net position may serve over time as a useful indicator of a government's financial position. In the City of Eagle Lake's case, assets exceeded liabilities by \$7,063,350 at the close of the most recent fiscal year.

As shown in Table 1, by far the largest portion of the City of Eagle Lake's net position (63%) reflects its investment in capital assets (e.g., land, buildings, improvements, machinery and equipment and vehicles), less any related debt used to acquire those assets that is still outstanding. The City of Eagle Lake uses these capital assets to provide services to citizens; consequently, those assets are *not* available for future spending.

Although the City of Eagle Lake's investment in its capital assets is reported net of related debt, it should be noted that the resources needed to repay this debt must be provided from other sources, since the capital assets cannot be used to liquidate these liabilities.

Condensed Statement of Net Position
September 30, 2016

Table 1

	Governmental activities		Business-type activities		Total	
	2016	2015	2016	2015	2016	2015
ASSETS						
Current and other assets	\$1,311,217	\$1,166,052	\$1,678,578	\$1,657,709	\$2,989,795	\$2,823,761
Capital assets	2,923,627	3,162,262	2,867,385	2,975,972	5,791,012	6,138,234
Deferred outflows	320,600	138,603	-	-	320,600	138,603
Total assets	<u>4,555,444</u>	<u>4,466,917</u>	<u>4,545,963</u>	<u>4,633,681</u>	<u>9,101,407</u>	<u>9,100,598</u>
LIABILITIES						
Current and other liabilities	54,888	50,919	130,956	128,587	185,844	179,506
Long-term liabilities	1,799,527	1,506,879	52,686	29,007	1,852,213	1,535,886
Total liabilities	<u>1,854,415</u>	<u>1,557,798</u>	<u>183,642</u>	<u>157,594</u>	<u>2,038,057</u>	<u>1,715,392</u>
NET POSITION						
Net Investment in						
Capital Assets	1,599,062	1,697,262	2,849,576	2,975,672	4,448,638	4,672,934
Restricted	250,808	114,730	169,462	169,298	420,270	284,028
Unrestricted	851,159	1,097,127	1,343,283	1,330,817	2,194,442	2,427,944
Total net position	<u>\$2,701,029</u>	<u>\$2,909,119</u>	<u>\$4,362,321</u>	<u>\$4,475,787</u>	<u>\$7,063,350</u>	<u>\$7,384,906</u>

An additional portion of the City of Eagle Lake's net position (6%) represents resources that are subject to external restrictions on how they may be used. The remaining balance of *unrestricted net position* \$2,194,442 may be used to meet the City's ongoing obligations to citizens and creditors.

At the end of the current fiscal year, the City of Eagle Lake is able to report positive balances in all three categories of net position, both for the City as a whole, as well as for its separate governmental and business-type activities.

The City's net position decreased by \$321,556 during the current fiscal year. This decrease was the result of an decrease from governmental activities of \$208,090 and a decrease of \$113,466 from business-type activities. These changes are addressed in the following pages.

Governmental activities. Governmental activities decreased the City's net position by 208,090, as reflected below in Table 2 (after transfers in). Before transfers in, net position decreased by \$433,683.

Condensed Statement of Activities
September 30, 2016

Table 2

	Governmental activities		Business-type activities		Total	
	2016	2015	2016	2015	2016	2015
Revenues						
Program revenues						
Charges for services	\$ -	\$ -	\$ 2,092,767	\$ 2,060,979	\$ 2,092,767	\$ 2,060,979
Operating grants and contributions	13,000	12,500	-	-	13,000	12,500
Capital grants and contributions	152,592	468,431	34,141	-	186,733	468,431
General revenues						
Property taxes	742,043	747,397	-	-	742,043	747,397
Other non-property taxes	248,987	247,836	-	-	248,987	247,836
Sales taxes	268,305	256,324	-	-	268,305	256,324
Other revenues	499,845	359,973	1,857	1,655	501,702	361,628
Total revenues	<u>1,924,772</u>	<u>2,092,461</u>	<u>2,128,765</u>	<u>2,062,634</u>	<u>4,053,537</u>	<u>4,155,095</u>
Expenses						
General government	729,956	748,180	-	-	729,956	748,180
Public safety	934,997	871,548	-	-	934,997	871,548
Streets	377,588	416,305	-	-	377,588	416,305
Airport	116,891	115,710	-	-	116,891	115,710
Parks and recreation	168,405	150,082	-	-	168,405	150,082
Interest on long-term debt	30,618	35,775	-	-	30,618	35,775
Water	-	-	673,982	647,926	673,982	647,926
Sewer	-	-	801,130	801,529	801,130	801,529
Garbage	-	-	539,467	541,408	539,467	541,408
Amortization expense	-	-	2,059	2,059	2,059	2,059
Total expenses	<u>2,358,455</u>	<u>2,337,600</u>	<u>2,016,638</u>	<u>1,992,922</u>	<u>4,375,093</u>	<u>4,330,522</u>
Excess (deficiency) of revenues over expenses before transfers	(433,683)	(245,139)	112,127	69,712	(321,556)	(175,427)
Transfers in (out)	<u>225,593</u>	<u>217,241</u>	<u>(225,593)</u>	<u>(217,241)</u>	<u>-</u>	<u>-</u>
Increase (decrease) in net assets	(208,090)	(27,898)	(113,466)	(147,529)	(321,556)	(175,427)
Net Position - October 1 (Beginning)	2,909,119	2,582,676	4,475,787	4,623,316	7,384,906	7,205,992
Prior Period Adjustment	<u>-</u>	<u>354,341</u>	<u>-</u>	<u>-</u>	<u>-</u>	<u>354,341</u>
Net Position - September 30 (Ending)	<u>\$ 2,701,029</u>	<u>\$ 2,909,119</u>	<u>\$ 4,362,321</u>	<u>\$ 4,475,787</u>	<u>\$ 7,063,350</u>	<u>\$ 7,384,906</u>

Business-type activities. Business-type activities decreased the City's net position by \$113,466 (after transfers). Before transfers, business-type activities increased the City's net position by \$112,127.

Financial Analysis of the City's Funds

As noted earlier, the City uses fund accounting to ensure and demonstrate compliance with finance-related legal requirements.

Governmental funds. The focus of the City's *governmental funds* is to provide information on near-term inflows, outflows, and balances of *spendable* resources. Such information is useful in assessing the City's financing requirements. In particular, *unreserved fund balance* may serve as a useful measure of a government's net resources available for spending at the end of the fiscal year.

As of the end of the current fiscal year, the City's governmental funds reported combined ending fund balances of \$1,119,323, an increase of \$144,734 from the prior year. \$868,515 of ending fund balance constitutes unreserved, undesignated fund balance, which is available for spending at the City's discretion. The remainder of fund balance is reserved or designated to indicate that it is not available for new spending because it has already been committed to debt service \$61,600 or for a variety of other restricted purposes \$189,208.

The general fund is the chief operating fund of the City of Eagle Lake. At the end of the current fiscal year, unreserved fund balance of the general fund was \$443,801 while total fund balance reached \$631,420. As a measure of the general fund's liquidity, it may be useful to compare both unreserved fund balance and total fund balance to total fund expenditures. Unreserved fund balance represents 25% of total general fund expenditures, while total fund balance represents 35% of that same amount.

The fund balance of the City of Eagle Lake's general fund increased by \$97,131 during the current fiscal year. Revenues have remained relatively constant for the last ten years. Revenues increased over the prior year. Expenditures increased over the prior year. Refunding bond monies are recorded in the General Fund until prior debt is paid off. The remaining balance, if any, will be transferred to the debt service fund to help pay the remaining debt.

The debt service fund has a total fund balance of \$61,600, all of which is reserved for the payment of debt service. The net increase in fund balance during the current year in the debt service fund was \$4,792, which was \$7,024 better than anticipated.

Proprietary funds. The City of Eagle Lake's proprietary funds provide the same type of information found in the government-wide financial statements, but in more detail.

Unrestricted net position for the Utility Fund at the end of the year amounted to \$1,343,283. Net position for the Utility Fund reflected an increase of \$77,986 before transfers of \$225,593. Factors concerning the finances of the Utility fund have already been addressed in the discussion of the City's business-type activities.

Capital Asset and Debt Administration

Capital assets. The City of Eagle Lake's investment in capital assets for its governmental and business-type activities as of September 30, 2016, amounts to \$5,791,012 (net of accumulated depreciation). This investment in capital assets includes land, buildings, water and sewer system, improvements, machinery and equipment, park facilities, and streets. The total decrease in the City's investment in capital assets for the current fiscal year was 5.7%. (a 7.5% decrease for governmental activities and a 3.6% decrease for business-type activities).

Major capital asset events during the current fiscal year included the following:

Capital Assets
(net of depreciation)

Table 3

	Governmental activities		Business-type activities		Total	
	2016	2015	2016	2015	2016	2015
Land	\$ 643,044	\$ 643,044	\$ 8,315	\$ 8,315	\$ 651,359	\$ 651,359
Buildings	616,491	757,350	480	960	616,971	758,310
Improvements	1,182,338	1,286,425	2,055,698	2,225,175	3,238,036	3,511,600
Machinery and equipment	343,251	396,603	692,241	713,878	1,035,492	1,110,481
Vehicles	129,104	78,840	76,510	27,344	205,614	106,184
Construction in progress	9,399	-	34,141	-	43,540	-
Total	<u>\$ 2,923,627</u>	<u>\$3,162,262</u>	<u>\$2,867,385</u>	<u>\$2,975,672</u>	<u>\$ 5,791,012</u>	<u>\$6,137,934</u>

Additional information on the City of Eagle Lake's capital assets can be found in Note C on page 34 of this report.

Long-term debt. At the end of the current fiscal year, the City of Eagle Lake had total bonded debt outstanding of \$1,250,000. This amount, \$1,250,000 is completely backed by the full faith and credit of the City.

**Outstanding Debt
Certificates of Obligation**

Table 4

	Governmental activities		Business-type activities		Total	
	2016	2015	2016	2015	2016	2015
2012 Limited Tax Refunding Bonds	\$1,250,000	\$1,465,000	\$ -	\$ -	\$1,250,000	\$1,465,000
Total	<u>\$1,250,000</u>	<u>\$1,465,000</u>	<u>\$ -</u>	<u>\$ -</u>	<u>\$1,250,000</u>	<u>\$1,465,000</u>

The bonds have an interest rate of 2.17% and maturity of March 1, 2023. Interest is payable semiannually on March 1 and September 1.

Additional information on the City of Eagle Lake's long-term debt can be found in Note G on pages 36-37 of this report.

Economic Factors and Next Year's Budget

- The unemployment rate for Colorado County is currently 5.6% (Eagle Lake is the second largest of the three incorporated cities in the county), which is an increase from a rate of 4.2% a year ago. This compares unfavorably to the state's average unemployment rate of 4.7% and national average rate of 4.9%.
- Inflationary trends in the region compare favorably to national indices.
- Property tax values continue to climb in Colorado County and the region in general. Ad valorem tax revenues make up the largest component of the City's governmental revenue (37%).
- Fuel costs have increased in all City departments, and in particular, departments which require heavy use of vehicles such as the Police Department and the Garbage Department.
- The City is not immune to the trend of rising health insurance costs in the Country.

All of these factors were considered in preparing the City's budget for the 2017 fiscal year.

The General Fund budget for 2017 includes transfers in (from the Utility Fund) to help it meet its proposed expenditures.

Requests for Information

This financial report is designed to provide a general overview of the City of Eagle Lake's finances for all those with an interest in the City's finances. Questions concerning any of the information provided in this report or requests for additional financial information should be addressed to the City of Eagle Lake, Texas, P.O. Box 38, Eagle Lake, Texas 77434.

BASIC FINANCIAL STATEMENTS

City of Eagle Lake, Texas
Statement of Net Position
September 30, 2016

	Primary Government		
	Governmental	Business-Type	
	Activities	Activities	Total
ASSETS			
Cash and Cash Equivalents	\$ 538,523	\$ 1,452,154	\$ 1,990,677
Investments-Current	-	46,627	46,627
Receivables (net, where applicable of allowance for uncollectible)	183,279	253,352	436,631
Internal Balances	447,318	(447,318)	-
Inventories	-	78,476	78,476
Restricted Assets:			
Temporarily Restricted:			
Restricted Assets-Cash	142,097	292,547	434,644
Deferred Charges	-	2,740	2,740
Capital Assets Not Being Depreciated	652,443	42,456	694,899
Capital Assets Net of Accumulated Depreciation	2,271,184	2,824,929	5,096,113
Total Assets	<u>\$ 4,234,844</u>	<u>\$ 4,545,963</u>	<u>\$ 8,780,807</u>
DEFERRED OUTFLOW OF RESOURCES			
Deferred Outflow Related to Pensions	\$ 320,600	\$ -	\$ 320,600
Total Deferred Outflow of Resources	<u>\$ 320,600</u>	<u>\$ -</u>	<u>\$ 320,600</u>
LIABILITIES			
Accounts Payable	\$ 53,693	\$ 7,596	\$ 61,289
Matured Bonds and Coupons Payable	1,195	375	1,570
Payable From Restricted Assets	-	122,985	122,985
Noncurrent Liabilities:			
Net Pension Liability	449,683	-	449,683
Due Within One Year	264,844	34,877	299,721
Due In More Than One Year	1,085,000	17,809	1,102,809
Total Liabilities	<u>1,854,415</u>	<u>183,642</u>	<u>2,038,057</u>
NET ASSETS			
Net Investment in Capital Assets	1,599,062	2,849,576	4,448,638
Restricted For:			
Retirement of Long-Term Debt	61,600	1,609	63,209
Law Enforcement	48,020	-	48,020
Committed For:			
Capital Expenditures for Equipment	-	145,521	145,521
Construction	5,572	22,332	27,904
Other	135,616	-	135,616
Unrestricted	851,159	1,343,283	2,194,442
Total Net Position	<u>\$ 2,701,029</u>	<u>\$ 4,362,321</u>	<u>\$ 7,063,350</u>

The accompanying notes are an integral part of the financial statements.

City of Eagle Lake, Texas
Statement of Activities
For the Year Ended September 30, 2016

Function/Programs	Program Revenues				Net Revenue (Expense) and Changes in Net Position		
	Expenses	Charges for Services	Operating Grants and Contri- butions	Capital Grants and Contri- butions	Primary Government		Total
					Govern- mental Activities	Business- Type Activities	
Primary Government							
Governmental Activities:							
General Government	\$ 729,956	\$ -	\$ -	\$ 97,592	\$ (632,364)	\$ -	\$ (632,364)
Police	825,327	-	-	-	(825,327)	-	(825,327)
Fire	109,670	-	13,000	-	(96,670)	-	(96,670)
Streets	377,588	-	-	-	(377,588)	-	(377,588)
Airport	116,891	-	-	-	(116,891)	-	(116,891)
Parks and Recreation	168,405	-	-	55,000	(113,405)	-	(113,405)
Interest on Long-Term Debt	30,618	-	-	-	(30,618)	-	(30,618)
Total Governmental Activities	2,358,455	-	13,000	152,592	(2,192,863)	-	(2,192,863)
Business-Type Activities							
Water	673,982	763,008	-	-	-	89,026	89,026
Sewer	801,130	788,083	-	34,141	-	21,094	21,094
Garbage	539,467	541,676	-	-	-	2,209	2,209
Total Business-Type Activities	2,014,579	2,092,767	-	34,141	-	112,329	112,329
Total Primary Government	<u>\$ 4,373,034</u>	<u>\$ 2,092,767</u>	<u>\$ 13,000</u>	<u>\$ 186,733</u>	(2,192,863)	112,329	(2,080,534)
General Revenues:							
Property Taxes					742,043	-	742,043
Other Non-Property Taxes					248,987	-	248,987
Sales Taxes					268,305	-	268,305
Loss on Sale of Asset					(36,284)	-	(36,284)
Miscellaneous					536,129	-	536,129
Unrestricted Investment Earnings					-	1,857	1,857
Amortization Expense					-	(2,059)	(2,059)
Transfers					225,593	(225,593)	-
Total General Revenues and Transfers					<u>1,984,773</u>	<u>(225,795)</u>	<u>1,758,978</u>
Change in Net Assets					(208,090)	(113,466)	(321,556)
Net Position - Beginning					2,909,119	4,475,787	7,384,906
Net Position - Ending					<u>\$ 2,701,029</u>	<u>\$ 4,362,321</u>	<u>\$ 7,063,350</u>

The accompanying notes are an integral part of the financial statements.

CITY OF EAGLE LAKE, TEXAS
BALANCE SHEET
GOVERNMENTAL FUNDS
YEAR ENDED SEPTEMBER 30, 2016

		Special Revenue	Debt Service
	General	Contingency	
ASSETS			
Cash and Cash Equivalents	\$ 28,926	\$ 348,278	\$ 62,795
Cash - Restricted	142,097	-	-
Receivables (Net of Allowance for Uncollectibles)	141,026	-	42,253
Due From Other Funds	487,817	-	-
Total Assets	<u>\$ 799,866</u>	<u>\$ 348,278</u>	<u>\$ 105,048</u>
LIABILITIES AND FUND BALANCES			
Liabilities			
Accounts Payable	53,693	-	-
Due to Other Funds	20,000	-	-
Matured Bonds and Coupons	-	-	1,195
Deferred Revenues	94,753	-	42,253
Total Liabilities	<u>168,446</u>	<u>-</u>	<u>43,448</u>
Fund Balances:			
Restricted Fund Balances:			
Retirement of Long-Term Debt	-	-	61,600
Law Enforcement	46,431	-	-
Committed Fund Balances			
Other	135,616	-	-
Street Construction	5,572	-	-
Unassigned	443,801	348,278	-
Total Fund Balances	<u>631,420</u>	<u>348,278</u>	<u>61,600</u>
Total Liabilities and Fund Balances	<u>\$ 799,866</u>	<u>\$ 348,278</u>	<u>\$ 105,048</u>

The accompanying notes are an integral part of the financial statements.

Capital Project		Total
Airport Construction	Other Governmental	Governmental Funds
\$ -	\$ 98,524	\$ 538,523
-	-	142,097
-	-	183,279
-	-	487,817
<u>\$ -</u>	<u>\$ 98,524</u>	<u>\$ 1,351,716</u>

-	-	53,693
-	20,499	40,499
-	-	1,195
-	-	137,006
<u>-</u>	<u>20,499</u>	<u>232,393</u>

-	-	61,600
-	1,589	48,020
-	-	135,616
-	-	5,572
-	76,436	868,515
<u>-</u>	<u>78,025</u>	<u>1,119,323</u>
<u>\$ -</u>	<u>\$ 98,524</u>	<u>\$ 1,351,716</u>

This page left blank intentionally.

CITY OF EAGLE LAKE, TEXAS
RECONCILIATION OF THE GOVERNMENTAL FUNDS BALANCE SHEET TO THE
STATEMENT OF NET ASSETS
FOR THE YEAR ENDED SEPTEMBER 30, 2016

Total Fund Balances - Governmental Funds	\$ 1,119,323
Capital assets used in governmental activities are not financial resources and, therefore, are not reported in governmental funds.	2,923,627
Deferred property taxes are not available to pay for current-period expenditures and, therefore, are deferred in the funds.	137,006
Recognition of the City's proportionate share of the net pension liability is not reported in governmental funds. The net effect of the current year's liability is to increase net position.	(129,083)
Long-term liabilities, are not due and payable in the current period and, therefore, not reported in the funds.	
Limited Tax Refunding Bond, Series 2012	(1,250,000)
Capitalized leases	(74,565)
Compensated absences	(25,279)
Net Assets of Governmental Activities	<u>\$ 2,701,029</u>

The accompanying notes are an integral part of the financial statements.

CITY OF EAGLE LAKE, TEXAS

STATEMENT OF REVENUES, EXPENDITURES AND CHANGES IN FUND BALANCE

GOVERNMENTAL FUNDS

YEAR ENDED SEPTEMBER 30, 2016

	General	Special Revenue Contingency	Debt Service	Capital Project Airport Construction
REVENUES:				
Ad Valorem Taxes	\$ 492,794	\$ -	\$ 249,249	\$ -
Non-Property Taxes	517,292	-	-	-
Licenses and Permits	21,750	-	-	-
Fines and Forfeitures	183,006	-	-	-
Use of Property	37,716	-	-	-
Miscellaneous Revenue	270,711	502	-	-
Grant Revenue	55,000	-	-	-
Intergovernmental Revenue	13,000	-	-	-
Total Revenues	<u>1,591,269</u>	<u>502</u>	<u>249,249</u>	<u>-</u>
EXPENDITURES:				
Current:				
Administrative and General	332,710	-	-	-
Police Department	790,533	-	-	-
Fire Department	69,097	-	-	-
Streets and Drainage	285,401	-	-	-
Airport	27,593	-	-	-
Parks and Recreation	112,232	-	-	-
Debt Service:				
Principal	30,453	-	215,000	-
Interest	951	-	29,457	-
Capital Outlay	151,074	-	-	-
Total Expenditures	<u>1,800,044</u>	<u>-</u>	<u>244,457</u>	<u>-</u>
Excess (Deficiency) of Revenues over (under)				
Expenditures	<u>(208,775)</u>	<u>502</u>	<u>4,792</u>	<u>-</u>
OTHER FINANCING SOURCES (USES):				
Capitalized Lease	87,208	-	-	-
Transfers In	218,698	6,000	-	-
Total Other Financing Sources (Uses)	<u>305,906</u>	<u>6,000</u>	<u>-</u>	<u>-</u>
Net Change	97,131	6,502	4,792	-
Fund Balance - October 1 (Beginning)	534,289	341,776	56,808	-
Fund Balance - September 30 (Ending)	<u>\$ 631,420</u>	<u>\$ 348,278</u>	<u>\$ 61,600</u>	<u>\$ -</u>

The accompanying notes are an integral part of the financial statements.

<u>Other Governmental</u>	<u>Total Governmental Funds</u>
\$ -	\$ 742,043
-	517,292
-	21,750
-	183,006
80,738	118,454
11,068	282,281
97,592	152,592
-	13,000
<u>189,398</u>	<u>2,030,418</u>

98,587	431,297
-	790,533
-	69,097
-	285,401
36,073	63,666
-	112,232
9,540	254,993
210	30,618
36,923	187,997
<u>181,333</u>	<u>2,225,834</u>
<u>8,065</u>	<u>(195,416)</u>

27,349	114,557
895	225,593
<u>28,244</u>	<u>340,150</u>
36,309	144,734
41,716	974,589
<u>\$ 78,025</u>	<u>\$ 1,119,323</u>

This page left blank intentionally.

CITY OF EAGLE LAKE, TEXAS

***RECONCILIATION OF THE GOVERNMENTAL FUNDS STATEMENT OF REVENUES, EXPENDITURES,
AND CHANGES IN FUND BALANCES TO THE STATEMENT OF ACTIVITIES
FOR THE YEAR ENDED SEPTEMBER 30, 2016***

Total Net Change in Fund Balances - Governmental Funds **\$ 144,734**

Governmental funds report capital outlays as expenditures. However, in the statement of activities, the cost of those assets is allocated over their estimated useful lives and reported as depreciation expense.

Capital Outlay	77,997
Depreciation	(316,632)

Revenues in the statement of activities that do not provide current financial resources are not reported as revenues in the funds.

Deferred Tax Revenue	(3,538)
----------------------	---------

The issuance of long-term debt (e.g., bonds, leases) provides current financial resources to governmental funds, while the repayment of the principal of long-term debt consumes the current financial resources of governmental funds. Neither transaction, however, has any effect on net assets. Also, governmental funds report the effect of issuance costs, premiums, discounts, and similar items when debt is first issued, whereas these amounts are deferred and amortized in the statement of activities.

Principal Payments on Certificates of Obligation	215,000
Principal Payments on Capitalized Leases	39,993
Capitalized Lease Addition	(114,558)

Recognition of the City's proportionate share of the net pension expense is not reported in governmental funds. The net effect of the current year's expense is to decrease net position. (245,846)

Some expenses reported in the statement of activities do not require the use of current financial resources and, therefore, are not reported as expenditures in governmental funds.

Compensated Absences	(5,240)
----------------------	---------

Change in Net Position of Governmental Activities **\$ (208,090)**

The accompanying notes are an integral part of the financial statements.

CITY OF EAGLE LAKE, TEXAS
STATEMENT OF NET POSITION - PROPRIETARY FUNDS
YEAR ENDED SEPTEMBER 30, 2016

	Business-Type Activities -	
	Utility Fund	Community Development Fund
ASSETS		
Current Assets:		
Cash and cash equivalents	\$ 1,452,154	\$ -
Investments	46,627	-
Restricted cash and cash equivalents	292,547	-
Accounts receivable-net of uncollectible allowance	253,352	-
Due from other funds	40,499	-
Inventories	78,476	-
Total Current Assets	<u>2,163,655</u>	<u>-</u>
Noncurrent Assets:		
Deferred charges	2,740	-
Capital assets:		
Land	8,315	-
Buildings and system	110,052	-
Improvements other than buildings	9,035,374	-
Machinery and equipment	1,732,910	-
Vehicles	314,463	-
Construction in progress	-	34,141
	<u>11,201,114</u>	<u>34,141</u>
Accumulated depreciation - capital assets	(8,367,870)	-
Total Noncurrent Assets	<u>2,833,244</u>	<u>34,141</u>
Total Assets	<u>\$ 4,999,639</u>	<u>\$ 34,141</u>

The accompanying notes are an integral part of the financial statements.

CITY OF EAGLE LAKE, TEXAS
STATEMENT OF NET POSITION - PROPRIETARY FUNDS
YEAR ENDED SEPTEMBER 30, 2016

	Business-Type Activities -	
	Utility Fund	Community Development Fund
LIABILITIES		
Current Liabilities:		
Accounts payable	7,596	-
Due to other funds	487,817	-
Compensated absences	34,877	-
Customer deposits payable	122,985	-
Matured coupons payable	375	-
Capital leases payable - current	8,630	-
Total Current Liabilities	662,280	-
Noncurrent Liabilities		
Capital leases payable	9,179	-
Total Noncurrent Liabilities	9,179	-
Total Liabilities	671,459	-
NET POSITION		
Net investment in capital assets	2,815,435	34,141
Restricted for:		
Construction	22,332	-
Debt service	1,609	-
Capital outlay	145,521	-
Unrestricted	1,343,283	-
Total Net Position	\$ 4,328,180	\$ 34,141

CITY OF EAGLE LAKE, TEXAS
STATEMENT OF REVENUES, EXPENSES AND
CHANGES IN FUND NET POSITION - PROPRIETARY FUNDS
YEAR ENDED SEPTEMBER 30, 2016

	Business-Type Activities -	
	Utility Fund	Community Development Fund
OPERATING REVENUES:		
Charges for Sales and Services		
Water sales	\$ 763,008	\$ -
Sewer charges	757,171	-
Garbage fees	541,676	-
Late payment penalties	30,912	-
Miscellaneous	-	-
Total Operating Revenues	<u>2,092,767</u>	<u>-</u>
OPERATING EXPENSES:		
Personnel	675,970	-
Maintenance and operations	972,336	-
Depreciation	366,273	-
Total Operating Expenses	<u>2,014,579</u>	<u>-</u>
Operating Income	<u>78,188</u>	<u>-</u>
NON-OPERATING REVENUES (EXPENSES):		
Intergovernmental revenue	-	34,141
Investment earnings	1,857	-
Bond issuance costs	(2,059)	-
Total Non-Operating Revenue (Expenses)	<u>(202)</u>	<u>34,141</u>
Income Before Transfers	<u>77,986</u>	<u>34,141</u>
Transfers In (Out)	(225,593)	-
Change in Net Position	<u>(147,607)</u>	<u>34,141</u>
Total Net Position - October 1 (Beginning)	<u>4,475,787</u>	<u>-</u>
Total Net Position - September 30 (Ending)	<u>\$ 4,328,180</u>	<u>\$ 34,141</u>

The accompanying notes are an integral part of the financial statements.

CITY OF EAGLE LAKE, TEXAS
STATEMENT OF CASH FLOWS - PROPRIETARY FUNDS
YEAR ENDED SEPTEMBER 30, 2016

	Business-Type Activities -	
	Utility Fund	Community Development Fund
<u>Cash Flows from Operating Activities:</u>		
Receipts from customers and users	\$ 2,085,933	\$ -
Payments to suppliers	(824,036)	-
Payments employees	(670,100)	-
Net Cash Provided by Operating Activities	<u>591,797</u>	<u>-</u>
<u>Cash Flows from Non-Capital Financing Activities:</u>		
Proceeds from grant	-	34,141
Transfers to other funds	(225,593)	-
Net Cash Provided by (Used for) Non-Capital Financing Activities	<u>(225,593)</u>	<u>34,141</u>
<u>Cash Flows from Capital & Related Financing Activities:</u>		
Purchases of capital assets	(223,845)	(34,141)
Net Cash Provided by (Used for) Capital & Related Financing Activities	<u>(223,845)</u>	<u>(34,141)</u>
<u>Cash Flows from Investing Activities:</u>		
Interest received	1,857	-
Investments - other	(134)	-
Net Cash Provided by Investing Activities	<u>1,723</u>	<u>-</u>
Net Increase (Decrease) in Cash and Cash Equivalents	144,082	-
Cash and Cash Equivalents at Beginning of the Year:	1,600,619	-
Cash and Cash Equivalents at End of the Year:	<u>\$ 1,744,701</u>	<u>\$ -</u>
<u>Reconciliation to Total Cash and Cash Equivalents:</u>		
Cash and Cash Equivalents on Balance Sheet	\$ 1,452,154	\$ -
Restricted-Cash and Cash Equivalents on Balance Sheet	292,547	-
Total Cash and Cash Equivalents	<u>\$ 1,744,701</u>	<u>\$ -</u>

The accompanying notes are an integral part of the financial statements.

CITY OF EAGLE LAKE, TEXAS
STATEMENT OF CASH FLOWS - PROPRIETARY FUNDS
YEAR ENDED SEPTEMBER 30, 2016

	Business-Type Activities -	
	Utility Fund	Community Development Fund
<u>Reconciliation of Operating Income to Net Cash Provided by Operating Activities:</u>		
Operating Income:	\$ 78,188	\$ -
Adjustments to Reconcile Operating Income to Net Cash Provided by Operating Activities:		
Depreciation	366,273	-
Amortization	2,059	-
Effect of Increases and Decreases in Current Assets and Liabilities:		
Decrease (increase) in account receivable	6,834	-
Decrease (increase) in inventories	20,756	-
Decrease (increase) in due from other funds	25,000	-
Decrease (increase) in deferred charges	(2,059)	-
Increase (decrease) in accounts payable	379	-
Increase (decrease) in due to other funds	68,698	-
Increase (decrease) in compensated absences payable	5,870	-
Increase (decrease) in utility deposits	1,990	-
Increase (decrease) in capitalized leases payable	17,809	-
Net Cash Provided by Operating Activities	<u>\$ 591,797</u>	<u>\$ -</u>

The accompanying notes are an integral part of the financial statements.

CITY OF EAGLE LAKE, TEXAS
NOTES TO FINANCIAL STATEMENTS
SEPTEMBER 30, 2016

I. SUMMARY OF SIGNIFICANT ACCOUNTING POLICIES

A. General Statement

The City of Eagle Lake was incorporated under the laws of the State of Texas in 1888 and operates under a Manager-Council form of government. The following services are provided by the City: public safety (police and fire), public works (streets and drainage), parks and recreation, airport and utilities (water, sewer and garbage).

The accounting and reporting policies of the City relating to the funds included in the accompanying basic financial statements conform to accounting principles generally accepted in the United States of America applicable to state and local governments. Generally accepted accounting principles for local governments include those principles prescribed by the Governmental Accounting Standards Board (GASB), the American Institute of Certified Public Accountants in the publication entitled Audits of State and Local Governmental Units and by the Financial Accounting Standards Board (when applicable). The more significant accounting policies of the City are described below.

B. Financial Reporting Entity

The City's financial statements include the accounts of all City operations. The City has determined no entities exist which meet the criteria for including organizations as component units within the City's reporting entity, as set forth in Section 2100 of GASB's Codification of Governmental Accounting and Financial Reporting Standards. Therefore, there are no component units included in this report.

C. Government-Wide and Fund Financial Statements

The government-wide financial statements (the statement of net position and the statement of activities) report information on all of the nonfiduciary activities of the City. Governmental activities, which normally are supported by taxes and intergovernmental revenues, are reported separately from business-type activities, which rely to a significant extent on fees and charges for support.

The statement of activities demonstrates the degree to which the direct expenses of a given program are offset by program revenues. Direct expenses are those that are clearly identifiable with a specific program. Program revenues include 1) charges to customers or applicants who purchase, use or directly benefit from goods, services or privileges provided by a given program and 2) operating or capital grants and contributions that are restricted to meeting the operational or capital requirements of a particular program. Taxes and other items not properly included among program revenues are reported instead as general revenues.

Separate financial statements are provided for governmental funds and proprietary funds. Major individual governmental funds and major individual enterprise funds are reported as separate columns in the fund financial statements.

D. Measurement Focus, Basis of Accounting and Financial Statement Presentation

The government-wide statements and fund financial statements for proprietary funds are reported using the economic resources measurement focus and the accrual basis of accounting. The economic resources measurement focus means all assets and liabilities (whether current or non-current) are included on the statement of net position and the operating statements present increases (revenues) and decreases (expenses) in net total assets. Under the accrual basis of accounting, revenues are recognized when earned, including unbilled water, sewer and garage services which are accrued. Expenses are recognized at the time a liability is incurred.

CITY OF EAGLE LAKE, TEXAS
NOTES TO FINANCIAL STATEMENTS
SEPTEMBER 30, 2016

Governmental fund financial statements are reported using the current financial resources measurement focus and are accounted for using the modified accrual basis of accounting. Under the modified accrual basis of accounting, revenues are recognized when susceptible to accrual; i.e., when they become both measurable and available. "Measurable" means the amount of the transaction can be determined and "available" means collectible within the current period or soon enough thereafter to be used to pay liabilities of the current period. The City considers revenues as available if they are collected within 60 days of the end of the current fiscal period. Expenditures are recorded when the related fund liability is incurred. However, debt service expenditures, except for interest payable accrued at the debt issuance date for which cash is received with the debt proceeds, as well as expenditures related to compensated absences are recorded only when payment has matured and will be payable shortly after year-end..

The revenues susceptible to accrual are property taxes, licenses, charges for service, interest income and intergovernmental revenues. Sales taxes collected and held by the state at year-end on behalf of the government are also recognized as revenue. All other governmental fund revenues are considered to be measurable and available only when cash is received by the City.

As a general rule, the effect of interfund activity has been eliminated from the government-wide financial statements.

Fund Financial Statements:

The City segregates transactions related to certain functions or activities in separate funds in order to aid financial management and to demonstrate legal compliance. Separate statements are presented for governmental and proprietary activities. These statements present each major fund as a separate column on the fund financial statements; all non-major funds are aggregated and presented in a single column.

Governmental funds are those funds through which most governmental functions typically are financed. The measurement focus of governmental funds is on the sources, uses and balance of current financial resources. The City has presented the following major funds:

General Fund

The *General Fund* is the main operating fund of the City. This fund is used to account for all financial resources not accounted for in other funds. All general tax revenues and other receipts that are not restricted by law or contractual agreement to some other fund are accounted for in this fund. General operating expenditures, fixed charges and capital improvement costs that are not paid through other funds are paid from the General Fund.

Special Revenue Fund

The Contingency Fund is used to account for funds restricted by Council for future unforeseeable events.

Debt Service Fund

The *Debt Service Fund* is used to account for the accumulation of financial resources for the payment of principal, interest and related costs on general long-term debt paid primarily from taxes levied by the City. The fund balance of the Debt Service Fund is reserved to signify the amounts that are restricted exclusively for debt service expenditures.

Capital Project Fund

The *Capital Project Fund* is used to account for funds received and expended for purchase of improvements at the Eagle Lake regional airport.

CITY OF EAGLE LAKE, TEXAS
NOTES TO FINANCIAL STATEMENTS
SEPTEMBER 30, 2016

Proprietary Funds are accounted for using the economic resources measurement focus and the accrual basis of accounting. The accounting objectives are determinations of net income, financial position and cash flow. In accounting for proprietary funds, the City has chosen, as allowed by GASB Statement No. 20, to follow all GASB pronouncements as well as all applicable Financial Accounting Standards Board (FASB) pronouncements issued on or before November 30, 1989 which do not contradict or conflict with GASB pronouncements. All assets and liabilities are included on the Statement of Net Position. The City has presented the following major proprietary funds:

Utility Fund

The *Utility Fund* is used to account for the provision of water and sewer services and garbage collection to the residents of the City. Activities of the fund include administration, operations and maintenance of the water and sewer system and billing and collection activities.

The fund also accounts for the accumulation of resources for, and the payment of, long-term debt principal and interest for the Utilities Fund debt. All costs are financed through charges to utility customers with rates reviewed regularly and adjusted if necessary to ensure integrity of the funds.

Proprietary funds distinguish operating revenues and expenses from non-operating items. Operating revenues and expenses generally result from providing services and producing and delivering goods in connection with a proprietary's principal ongoing operations. Operating expenses for the proprietary fund include the cost of personal and contractual services, supplies and depreciation on capital assets. All revenues and expenses not meeting this definition are reported as non-operating revenues and expenses.

E. Budgetary Control

The City's fiscal year is the twelve-month period beginning October 1. The departments submit to the City Manager a budget of estimated expenditures for the ensuing fiscal year after which the City Manager subsequently submits a budget of estimated expenditures and revenues to the City Council by August 1.

Upon receipt of the budget estimates, the Council holds a public hearing on the proposed budget. Information about the Budget Ordinance is then published in the official newspaper of the City.

At least ten days prior to October 1, the budget is legally enacted through passage of an ordinance. The City Manager is authorized to transfer budgeted amounts between line items and departments within any fund; however any revisions that alter the total expenditures of any fund must be approved by the City Council.

Budgeted amounts are as originally adopted by the City Council, as there were no amendments made during the fiscal year.

F. Cash and Cash Equivalents

The City pools cash resources of its General and Utility funds to facilitate the management of cash. Cash applicable to a particular fund is readily identifiable. The balance in the pooled cash accounts is available to meet current operating requirements. Cash in excess of current requirements is invested in various interest-bearing deposits and disclosed as part of the City's deposits and investments.

The City considers its cash and certificates of deposits (including restricted assets), to be cash equivalents.

CITY OF EAGLE LAKE, TEXAS
NOTES TO FINANCIAL STATEMENTS
SEPTEMBER 30, 2016

G. Inventories and Prepaid Items

Proprietary Fund Inventories are valued at cost using the first-in/first-out (FIFO) method. The City had no significant inventories in the General or Special Revenue Funds. Where certain payments to vendors reflect costs applicable to future accounting periods they are recorded as prepaid items.

H. Interfund Receivables and Payables

Activity between funds that are representative of lending/borrowing arrangements outstanding at the end of the fiscal year are referred to as either "due to/from other funds". Any residual balances outstanding between the governmental activities and business-type activities are reported in the governmental-wide financial statements as "internal balances".

I. Transactions Between Funds

Legally authorized transfers are treated as interfund transfers and are included in the results of operations of both Government and Proprietary Funds.

J. Capital Assets

Capital assets, which include property, plant, equipment, and infrastructure assets, are reported in the applicable governmental or business-type activities columns in the government-wide financial statements and in the fund financial statements for proprietary funds. Management determines which assets are capitalized based on the nature of the asset and its estimated useful life regardless of cost. All capital assets are valued at historical cost or estimated historical cost if actual historical cost is not available. Donated assets are valued at their fair market value on the date donated. Repairs and maintenance are recorded as expenses. Renewals and betterments are capitalized. Interest has not been capitalized during the construction period on capital assets.

Depreciation has been calculated on each class of depreciable property using the straight-line method. Estimated useful lives are as follows:

<u>Assets</u>	<u>Years</u>
Buildings	20 – 50
Infrastructure	10 – 50
Machinery and equipment	5 – 20
Vehicles	5 – 15

K. Compensated Absences

Vacation time may be accumulated up to the maximum number of hours an employee earns during a twenty-four month period. Accumulated sick leave is for the sole purpose of permitting an employee to be relieved of his duties during actual illness and may not be used under any other circumstances.

L. Fund Balances – Governmental Funds

Fund balances of the governmental funds are classified as follows:

Nonspendable Fund Balance – Fund balance reported as "nonspendable" represents fund balance associated with inventory or prepaid items. The cash outlay for these types of items has already been made and, therefore, the resources represented by this fund balance classifications cannot be spent again.

CITY OF EAGLE LAKE, TEXAS
NOTES TO FINANCIAL STATEMENTS
SEPTEMBER 30, 2016

Restricted Fund Balance – Fund balance reported as “restricted” represents amounts that can be spent only on the specific purposes stipulated by law or the external providers of those resources.

Committed Fund Balance – Fund balance reported as “committed” represents amounts that can be spent only for the specific purposes determined by a formal action of our City’s highest level of decision-making authority.

Assigned Fund Balance – Fund balance reported as “assigned” represents amounts intended to be used for specific purposes, but not meeting the criteria to be reported as “committed” or “restricted” fund balance. Our governing body may grant to an administrator within the organization the authority to assign fund balance.

Unassigned Fund Balance – Fund balance reported as “unassigned” represents the residual classification of fund balance and includes all spendable amounts not contained within the other classifications. These amounts are unconstrained in that they may be spent for any purpose.

When an expenditure is incurred for a purpose for which both restricted and unrestricted fund balance is available, the City considers restricted funds to have been spent first. When an expenditure is incurred for which committed, assigned, or unassigned fund balances are available, the City considers amounts to have been spent first out of committed funds, then assigned funds, and finally unassigned funds.

M. Net Position

Net position represents the difference between assets and liabilities. Net investment in capital assets, net of related debt consists of capital assets, net of accumulated depreciation, reduced by the outstanding balances of any borrowing used for the acquisition, construction or improvements of those assets, and adding back unspent proceeds. Net position is reported as restricted when there are limitations imposed on its use either through the enabling legislation adopted by the City or through external restrictions imposed by creditors, grantors or laws or regulations of other governments.

II. DETAILED NOTES ON ALL FUNDS

A. Deposits and Investments

At year end, the carrying amount of the City’s deposits with financial institutions was \$2,273,612 and the bank balance was \$2,381,171. Of the bank balance, \$1,395,857 was covered by federal depository insurance. The remaining balance was covered by collateral held in the pledging financial institutions’ trust department in the City’s name.

The City’s deposits and investments consist of the following as permitted by The Public Funds Investment Act and the City of Eagle Lake’s adopted Investment Policy:

Fully insured or collateralized certificates of deposit from a bank doing business in the State of Texas and under the terms of a written depository agreement with that bank, not to exceed two years to stated maturity; and constant dollar Texas Local Government Investment Pools.

The City’s investment policy, in an effort to control credit risk, requires depositories to provide 100% of the market value of the City’s time or demand deposits as collateral.

At year end, the City’s investment balances were as follows:

	Reported Amount/ Fair Value
Tex-Pool - Investments not subject to categorization	\$ 46,628

CITY OF EAGLE LAKE, TEXAS
NOTES TO FINANCIAL STATEMENTS
SEPTEMBER 30, 2016

The City's investment policy requires investment pools to be continuously rated no lower than AAA or AAAm by a nationally recognized rating service. Its policy also requires the pool to maintain a market value ratio of between .995 and 1.005. The City's funds in Tex-Pool have a dollar weighted average maturity of 27 days.

Tex-Pool Investments are not categorized in accordance with GASB No. 3, because they are not evidenced by securities that exist in physical or book entry form. Tex-Pool operates in a manner consistent with the SEC's Rule 2a7 of the Investment Company Act of 1940. Tex-Pool uses and amortized cost rather than market value to report net assets to compute share prices. Accordingly, the fair value of the position in Tex-Pool is the same as the value of Tex-Pool shares. Market value per share was 1.00 at September 30, 2016.

The State Comptroller of Public Accounts exercises oversight responsibility over Tex-Pool, the Texas Local Government Investment Pool. Oversight includes the ability to significantly influence operation, designation of management and accountability for fiscal matters. Additionally, the State Comptroller has established an advisory board composed of both participants in Tex-Pool and other persons who do not have a business relationship with Tex-Pool. The Advisory Board members review the investment policy and management fee structure. Finally, Tex-Pool is rated AAAm by Standard and Poors. As a requirement to maintain the rating, weekly portfolio information must be submitted to Standard and Poors, as well as the office of the Comptroller of Public Accounts for review.

B. Receivables

Receivables as of year end for the City, including the applicable allowances for uncollectible accounts, are as follows:

	Accounts	Taxes	Special Assessment	Total Receivables
Governmental activities				
General	\$ -	\$ 103,897	\$ 2,856	\$ 106,753
Sales taxes	-	46,273	-	46,273
Debt service	-	45,753	-	45,753
	-	195,923	2,856	198,779
Business-type activities				
Utilities	262,248	-	-	262,248
Gross receivables	262,248	195,923	2,856	461,027
Less: allowance for uncollectibles	(8,896)	(15,500)	-	(24,396)
Net total receivables	\$ 253,352	\$ 180,423	\$ 2,856	\$ 436,631

Governmental funds report *deferred revenue* in connection with receivables for revenues that are not considered to be available to liquidate liabilities of the current period. Governmental funds also defer revenue recognition in connection with resources that have been received, but not yet earned. At the end of the current fiscal year, the various components of *deferred revenue* reported in the governmental funds were as follows:

	Unavailable	Unearned
Delinquent property taxes receivable (general fund)	\$ 91,897	\$ -
Delinquent property taxes receivable (debt service fund)	42,253	-
Special assessments not yet due (general fund)	2,856	-
	<u>\$ 137,006</u>	<u>\$ -</u>

CITY OF EAGLE LAKE, TEXAS
NOTES TO FINANCIAL STATEMENTS
SEPTEMBER 30, 2016

Property taxes attach as an enforceable lien on property as of January 1. Taxes are levied on October 1 and are payable by February 1, at which time they become delinquent. The Colorado County Central Appraisal District assesses, bills and collects property taxes for the City.

C. Capital Assets

Capital asset activity for the year ended September 30, 2016 was as follows:

	Beginning Balance	Increases	Decreases	Ending Balance
Governmental activities:				
Capital assets not being depreciated:				
Land and improvements	\$ 643,044	\$ -	\$ -	\$ 643,044
Construction in progress	-	9,399	-	9,399
Total capital assets not being depreciated	643,044	9,399	-	652,443
Other capital assets:				
Buildings	1,312,183	-	(110,000)	1,202,183
Improvements	4,849,003	63,865	-	4,912,868
Machinery and equipment	1,445,535	27,525	-	1,473,060
Vehicles	768,294	87,208	-	855,502
Total other capital assets at historical cost	8,375,015	178,598	(110,000)	8,443,613
Less accumulated depreciation for:				
Buildings	(554,833)	(35,213)	4,354	(585,692)
Improvements	(3,562,578)	(167,952)	-	(3,730,530)
Machinery and equipment	(1,048,932)	(80,877)	-	(1,129,809)
Vehicles	(689,454)	(36,944)	-	(726,398)
Total accumulated depreciation	(5,855,797)	(320,986)	4,354	(6,172,429)
Total other capital assets, net	2,519,218	(142,388)	(105,646)	2,271,184
Governmental activities, capital assets, net	\$ 3,162,262	\$ (132,989)	\$ (105,646)	\$ 2,923,627
Business-type activities:				
Capital assets not being depreciated:				
Land and improvements	\$ 8,315	\$ -	\$ -	\$ 8,315
Construction in progress	-	34,141	-	34,141
Total capital assets not being depreciated	8,315	34,141	-	42,456
Other capital assets:				
Buildings	110,052	-	-	110,052
Improvements - Distribution and collection systems	8,994,672	40,702	-	9,035,374
Machinery and equipment	1,611,916	120,993	-	1,732,909
Vehicles	252,314	62,150	-	314,464
Total other capital assets at historical cost	10,968,954	223,845	-	11,192,799
Less accumulated depreciation for:				
Buildings	(109,092)	(480)	-	(109,572)
Improvements - Distribution and collection systems	(6,769,497)	(210,179)	-	(6,979,676)
Machinery and equipment	(898,038)	(142,630)	-	(1,040,668)
Vehicles	(224,970)	(12,984)	-	(237,954)
Total accumulated depreciation	(8,001,597)	(366,273)	-	(8,367,870)
Total other capital assets, net	2,967,357	(142,428)	-	2,824,929
Business-type activities, capital assets, net	\$ 2,975,672	\$ (108,287)	\$ -	\$ 2,867,385

CITY OF EAGLE LAKE, TEXAS
NOTES TO FINANCIAL STATEMENTS
SEPTEMBER 30, 2016

Depreciation expense was charged to functions/programs of the City as follows:

Governmental activities:	
General Government	\$ 7,961
Police	34,794
Fire	40,573
Streets	92,187
Airport	89,298
Parks	<u>56,173</u>
Total governmental activities	<u>\$ 320,986</u>
Business-type activities:	
Water	\$ 152,187
Sewer	210,189
Garbage	<u>3,897</u>
Total business-type activities	<u>\$ 366,273</u>

D. Leases

Operating Lease. For the year ended September 30, 2016, the City earned revenues as lessor of part of the City Hall Building to the United States Postal Service. The lease covers the period February 1st thru January 31st. Rent amount to be collected is \$11,220 per year thru January 2018.

The asset being leased is as follows:

	Governmental Activities
Asset:	
Building Cost	
City Hall and Post Office	\$ 83,685
Less: Accumulated depreciation	<u>(83,685)</u>
Carry amount	<u>\$ -</u>

E. Payables

Payables at September 30, 2016 were as follows:

	Vendors	Court Costs	TCEQ Fine Payable	Other	Total Payables
Governmental activities:					
General	<u>\$ 9,095</u>	<u>\$ 19,319</u>	<u>\$ -</u>	<u>\$ 25,279</u>	<u>\$ 53,693</u>
Business-type activities:					
Utilities	<u>\$ 7,596</u>	<u>\$ -</u>	<u>\$ -</u>	<u>\$ 34,877</u>	<u>\$ 42,473</u>

CITY OF EAGLE LAKE, TEXAS
NOTES TO FINANCIAL STATEMENTS
SEPTEMBER 30, 2016

F. Interfund Receivables, Payables, and Transfers

The composition of interfund balances at September 30, 2016 is as follows:

Due to/Due from:

<u>Fund</u>	<u>Interfund Receivable</u>	<u>Interfund Payable</u>
General	\$ 487,817	\$ 20,000
Airport Special Revenue Fund	-	20,499
Utility	40,499	487,817
Totals	<u>\$ 528,316</u>	<u>\$ 528,316</u>

Transfer In/Transfer Out

<u>Fund</u>	<u>Transfer In</u>	<u>Transfer Out</u>
Debt	\$ -	\$ -
General	218,698	-
Utility	-	225,593
TDHCA HOME Program Special Revenue Fund	895	-
Contingency Special Revenue Fund	6,000	-
Totals	<u>\$ 225,593</u>	<u>\$ 225,593</u>

G. Long-term debt

Long-term debt payable at September 30, 2016 consisted of the following issues:

	<u>Total Payable</u>	<u>Current Portion</u>
Governmental activities:		
Limited Tax Refunding Bond, Series 2012, 2.17% maturing annually through 2023; interest payable semi-annually	\$ 1,250,000	\$ 165,000
	<u>\$ 1,250,000</u>	<u>\$ 165,000</u>
Total long-term obligations	<u>\$ 1,250,000</u>	<u>\$ 165,000</u>

Capital Lease Obligations

The City has a long-term capital lease with First Capital Equipment Leasing Corporation to finance the acquisition of two police vehicles. The lease qualifies as a capital lease for accounting purposes and defined under the Financial Accounting Standards Board Statement No. 13, *Accounting for Leases*, and therefore has been recorded as the present value of future minimum lease payments at the date of inception of the lease. The vehicles were secured in February 2016 with an annual interest rate of 5.281% and the lease matures on February 28, 2018.

CITY OF EAGLE LAKE, TEXAS
NOTES TO FINANCIAL STATEMENTS
SEPTEMBER 30, 2016

The City has a long-term capital lease with John Deere Financial to finance the acquisition of a utility tractor and rotary cutter. The lease qualifies as a capital lease for accounting purposes and defined under the Financial Accounting Standards Board Statement No. 13, *Accounting for Leases*, and therefore has been recorded as the present value of future minimum lease payments at the date of inception of the lease. The equipment was secured in May 2016 with an annual interest rate of 6.5% and the lease matures on June 23, 2018.

Long-term Debt Activity

Long-term debt activity for the year ended September 30, 2016 was as follows:

	Beginning Balance	Additions	Reductions	Ending Balance	Due Within One Year
Governmental activities:					
Certificates of obligation	\$ 1,465,000	\$ -	(215,000)	\$ 1,250,000	\$ 165,000
Capitalized leases	-	114,558	(39,993)	74,565	36,256
Compensated absences	20,039	5,240	-	25,279	25,279
Total governmental activities	<u>\$ 1,485,039</u>	<u>\$ 119,798</u>	<u>(254,993)</u>	<u>\$ 1,349,844</u>	<u>\$ 226,535</u>
Business-type activities:					
Capitalized leases	\$ -	\$ 27,349	(9,540)	\$ 17,809	\$ 8,630
Compensated absences	29,007	5,870	-	34,877	34,877
Total business-type activities	<u>\$ 29,007</u>	<u>\$ 33,219</u>	<u>\$ (9,540)</u>	<u>\$ 52,686</u>	<u>\$ 43,507</u>
Total government	<u>\$ 1,514,046</u>	<u>\$ 153,017</u>	<u>(264,533)</u>	<u>\$ 1,402,530</u>	<u>\$ 270,042</u>

For governmental activities, compensated absences are generally liquidated by the general fund.

The annual requirements to pay principal and interest on long-term of obligations outstanding at September 30, 2016, excluding capital leases and accrued compensation payable, are as follows:

	Governmental Activities		Business-type Activities	
	Certificates of Obligation		Certificates of Obligation	
	Principal	Interest	Principal	Interest
2017	\$ 165,000	\$ 25,335	\$ -	\$ -
2018	170,000	21,700	-	-
2019	170,000	18,011	-	-
2020	180,000	14,214	-	-
2021	185,000	10,253	-	-
2022-2023	380,000	8,246	-	-
Total government	<u>\$ 1,250,000</u>	<u>\$ 97,759</u>	<u>\$ -</u>	<u>\$ -</u>

CITY OF EAGLE LAKE, TEXAS
NOTES TO FINANCIAL STATEMENTS
SEPTEMBER 30, 2016

H. Restricted assets

The balance of the restricted asset accounts in the enterprise funds were as follows:

	September 30, 2016	September 30, 2015
Current assets:		
Restricted cash and equivalents:		
Customer deposits - Utility Fund	\$ 123,085	\$ 120,995
Construction accounts	22,332	22,312
Capital outlay accounts	145,521	145,377
Debt service accounts	1,609	1,609
Total	<u>\$ 292,547</u>	<u>\$ 290,293</u>

I. Net Position Liability

For purposes of measuring the net pension liability, deferred outflows of resources and deferred inflows of resources related to pensions, and pension expense, information about the Fiduciary Net Position of the Texas Municipal Retirement System (TMRS) and additions to/deductions from TMRS's Fiduciary Net Position have been determined on the same basis as they are reported by TMRS. For this purpose, plan contributions are recognized in the period that compensation is reported for the employee, which is when contributions are legally due. Benefit payments and refunds are recognized when due and payable in accordance with the benefit terms. Investments are reported at fair value.

IV. OTHER INFORMATION

A. Risk Management

The City is exposed to various risks of loss related to torts; theft of, damage to and destruction of assets; errors and omissions; injuries to employees; and natural disasters. For its liability, property and worker's compensation insurance, the City is a participant in the Texas Municipal League Intergovernmental Risk Pool (TML), a public entity risk pool operated by the Texas Municipal League for the benefit of political subdivisions of the State of Texas. The City pays an annual premium to TML for this coverage.

TML is considered a self-sustaining risk pool that will provide coverage for its members for up to \$1 million per occurrence for property damage, \$1 million per occurrence for general liability and \$1 million per occurrence for worker's compensation. TML obtains independent coverage for insured events in excess of the amount listed above. There have been no significant reductions in insurance coverage and settlement amounts have not exceeded insurance coverage for the current year or the three prior years.

B. Contingent Liabilities

Amounts received or receivable from grant agencies are subject to audit and adjustment by grantor agencies, principally the federal government. Any disallowed claims, including amounts already collected, may constitute a liability of the applicable funds. The amount, if any, of expenditures which may be disallowed by the grantor cannot be determined at this time although the City expects such amounts, if any, to be immaterial.

CITY OF EAGLE LAKE, TEXAS
NOTES TO FINANCIAL STATEMENTS
SEPTEMBER 30, 2016

C. Employee Retirement Systems and Plans

Texas Municipal Retirement System (TMRS)

Plan Description

The City of Eagle Lake participates as one of 860 plans in the nontraditional, joint contributory, hybrid defined benefit pension plan administered by the Texas Municipal Retirement System (TMRS). TMRS is an agency created by the State of Texas and administered in accordance with the TMRS Act, Subtitle G, Title 8, Texas Government Code (The TMRS Act) as an agent multiple-employer retirement system for municipal employees in the State of Texas. The TMRS Act places the general administration and management of the System with a six-member Board of Trustees. Although the Governor, with the advice and consent of the Senate, appoints the Board, TMRS is not fiscally dependent on the State of Texas. TMRS's defined benefit pension plan is a tax-qualified plan under Section 401 (a) of the Internal Revenue Code. TMRS issues a publicly available comprehensive annual financial report (CAFR) that can be obtained at www.tmrs.com.

All eligible employees of the City are required to participate in TMRS.

The City of Eagle Lake Volunteer Firemen are covered by a separate pension plan, therefore they are not included in the Texas Municipal Retirement System plan.

Benefits Provided

TMRS provides retirement, disability, and death benefits. Benefit provisions are adopted by the governing body of the City, within the options available in the state statutes governing TMRS.

At retirement, the benefit is calculated as if the sum of the employee's contribution, with interest, and the City-financed monetary credits with interest were used to purchase an annuity. Members may choose to receive their retirement benefit in one of seven payments options. Members may also choose to receive a portion of their benefit as a Partial Lump Sum Distribution in an amount equal to 12, 24, or 36 monthly payments, which cannot exceed 75% of the member's deposits and interest.

Plan provisions for the City were as follows:

	<u>Plan Year 2014</u>	<u>Plan Year 2015</u>
Employee deposit rate	6%	6%
Matching ratio (city to employee)	2 to 1	2 to 1
Years required for vesting	10	10
Service retirement eligibility (expressed as age/years of service)	60/10,0/25	60/10,0/25
Updated Service Credit	100 % Repeating, Transfers	100 % Repeating, Transfers
Annuity Increase (to retirees)	70% of CPI Repeating	70% of CPI Repeating

CITY OF EAGLE LAKE, TEXAS
NOTES TO FINANCIAL STATEMENTS
SEPTEMBER 30, 2016

Employees covered by benefit terms.

At the December 31, 2014 valuation and measurement date, the following employees were covered by the benefit terms:

Inactive employees or beneficiaries currently receiving benefits	14
Inactive employees entitled to but not yet receiving benefits	28
Active employees	<u>28</u>
	70

Contributions

The contribution rates for employees in TMRS are either 5%, 6%, or 7% of employee gross earnings, and the City matching contributions are either 100%, 150%, or 200%, both as adopted by the governing body of the City. Under the state law governing TMRS, the contribution rate for each city is determined annually by the actuary, using the Entry Age Normal (EAN) actuarial cost method. The actuarially determined rate is the estimated amount necessary to finance the cost of benefits earned by employees during the year, with an additional amount to finance any unfunded accrued liability.

Employees for the City of Eagle Lake were required to contribute 6% of their annual gross earnings during the fiscal year. The contribution rates for the City of Eagle Lake were 7.26% and 8.29% in calendar years 2015 and 2016, respectively. The City's contributions to TMRS for the year ended September 30, 2016, were \$85,074, and were equal to the required contributions.

The funding status as of December 31, 2014, the most recent actuarial valuation date is as follows:

Actuarial Valuation Date	Actuarial Value of Assets	Actuarial Accrued Liability (AAL)	Funded Ratio	Unfunded AAL (UAAL)	Covered Payroll	UAAL as a Percentage of Covered Payroll
12/31/2015	\$ 3,746,120	\$ 4,118,927	90.9%	\$ 372,807	\$ 1,205,012	30.9%

The schedule of funding progress, presented as Required Supplementary Information following the notes to the financial statements, presents multi-year trend information about whether the actuarial value of plan assets is increasing or decreasing over time relative to the actuarial accrued liability of benefits.

Discount Rate Sensitivity Analysis

The following schedule shows the impact of the net pension liability if the discount rate used was 1 percentage point less and 1 percentage point greater than the discount rate that was used (7%) in measuring the 2014 net pension liability.

	1% Decrease 5.75%	Current Discount Rate 6.75%	1% Increase 7.75%
City's proportionate share of the net pension liability	\$ 1,063,263	\$ 449,683	\$ (48,134)

CITY OF EAGLE LAKE, TEXAS
NOTES TO FINANCIAL STATEMENTS
SEPTEMBER 30, 2016

Pension Liabilities, Pension Expense and Deferred Outflows and Inflows of Resources Related to Pensions

At September 30, 2016, the City reported a liability of \$449,683 for its proportionate share of the TMRS's net pension liability. This liability reflects a reduction for State pension support provided to the City. The amount recognized by the City as its proportionate share of the net pension liability, the related state support and the total portion of the net pension liability that was associated with the City were as follows:

City's proportionate share of the collective net pension liability	\$ 449,683
State's proportionate share of the net pension liability associated with the City	3,669,244
Total	<u>\$ 4,118,927</u>

The net pension liability was measured as of September 30, 2016 and the total pension liability used to calculate the net pension liability was determined by an actuarial valuation as of that date.

There were no changes of assumptions or other inputs that affected measurement of the total pension liability during the measurement period.

There were no changes of benefit terms that affected measurement of the total pension liability during the measurement period.

At September 30, 2016, the City of Eagle Lake, Texas reported its proportionate share of the TMRS' deferred/inflows of resources related to pensions from the following sources:

	Deferred Outflows of Resources	Deferred Inflows of Resources
Differences Between Expected and Actual Economic Experience	\$ 74,139	\$ -
Changes in Actuarial Assumptions	44,480	-
Differences Between Projected and Actual Investment Earnings	201,981	-
	<u>\$ 320,600</u>	<u>\$ -</u>

There were no deferred inflows of resources at September 30, 2016. The following is deferred outflows of resources, by year, to be recognized in future pension expense as follows:

Year Ended	Deferred Outflows of Resources
2016	\$ 162,326
2017	114,681
2018	43,593
2019	-
	<u>\$ 320,600</u>

At September 30, 2016, the City of Eagle Lake, Texas recognized pension expense of \$245,846 in the government – wide Statement of Activities

CITY OF EAGLE LAKE, TEXAS
NOTES TO FINANCIAL STATEMENTS
SEPTEMBER 30, 2016

Volunteer Firemen -- Texas Statewide Emergency Services Personnel Retirement Fund

Plan Description

Substantially all of the City of Eagle Lake's Volunteer Firemen are covered by the Texas Statewide Emergency Services Personnel Retirement Fund, a cost-sharing multiple employer pension plan, established and administered by the State of Texas.

The pension plan was created by Senate Bill 411, 65th Legislature, and was revised in the 76th Legislature. The plan includes retirement benefits as well as death and disability benefits.

All fire fighters in good standing who meet certain requirements as to attendance at drills and fire are covered. Members are vested beginning with the fifth year of service, at 5% per year of service for the first ten years and 10% for each of the next five years of service.

Upon reaching age 55, a vested member may retire and receive a monthly pension equal to his vested percentage multiplied by six times the governing body's average monthly contribution over the member's years of qualified service. For years of service in excess of 15 years, this monthly benefit is increased at the rate of 7% compounded annually. Death and disability benefits are dependent on whether or not the member was engaged in the performance of duties at the time of death or disability. Death benefits include a lump-sum amount and continuing monthly payments to a member's surviving spouse and/or dependents.

The Texas Statewide Emergency Services Personnel Retirement Fund issues a publicly available financial report that includes financial statements and required supplementary information. The report may be obtained by writing to Morris E. Sandefer, Commissioner, Fire Fighter's Pension Commission, P.O. Box 12577, Austin, Texas 78711-2577.

Three-Year Trend Information

Fiscal Year Funding	Annual Pension Cost (APC)	Percentage of APC Contributed	Net Pension Obligation
09/30/13	\$ 22,200	100%	\$ -
09/30/14	\$ 23,458	100%	\$ -
09/30/15	\$ 25,073	100%	\$ -

D. Analysis of Specific Deposit and Investment Risks

GASB Statement No. 40 requires a determination as to whether the City was exposed to the following specific investment risks at year end and if so, the reporting of certain related disclosures:

Credit Risk

The risk that an issuer or other counterparty to an investment will not fulfill its obligations. The ratings of securities by nationally recognized rating agencies are designed to give an indication of credit risk. At year end, the City was not exposed to credit risk.

CITY OF EAGLE LAKE, TEXAS
NOTES TO FINANCIAL STATEMENTS
SEPTEMBER 30, 2016

Custodial Credit Risk

Deposits are exposed to custodial credit risk if they are not covered by depository insurance and the deposits are uncollateralized, collateralized with securities held by the pledging financial institution, or collateralized with securities held by the pledging financial institution's trust department or agent but not in the City's name.

Investment securities are exposed to custodial credit risk if the securities are uninsured, are not registered in the name of the government or are held by either the counterparty or the counterparty's trust department or agent but not in the City's name.

At year end, the City was not exposed to custodial credit risk.

Concentration of Credit Risk

The risk of loss attributed to the magnitude of a government's investment in a single issuer. At year end, the City was not exposed to concentration of credit risk.

Interest Rate Risk

The risk that changes in interest rates will adversely affect the fair value of an investment. At year end, the City was not exposed to interest rate risk.

Foreign Currency Risk

The risk that exchange rates will adversely affect the fair value of an investment. At year end, the City was not exposed to foreign currency risk.

REQUIRED SUPPLEMENTARY INFORMATION

CITY OF EAGLE LAKE, TEXAS
STATEMENT OF REVENUES, EXPENDITURES AND CHANGES IN FUND BALANCE
BUDGET AND ACTUAL - GENERAL FUND
YEAR ENDED SEPTEMBER 30, 2016

	Budget Amounts		Actual	Variance With
	Original	Final	Amounts	Final Budget Positive or (Negative)
REVENUES:				
Taxes:				
Property Taxes	\$ 517,194	\$ 517,194	\$ 492,794	\$ (24,400)
General Sales and Use Taxes	260,000	260,000	268,304	8,304
Franchise Taxes	225,000	225,000	236,791	11,791
Other Taxes	8,500	8,500	12,197	3,697
Licenses and Permits	9,700	9,700	21,750	12,050
Fines and forfeitures	184,425	184,425	183,006	(1,419)
Use of property	35,720	35,720	37,716	1,996
Miscellaneous Revenue	57,975	57,975	201,349	143,374
Grant Revenue	-	-	55,000	55,000
Gain on Sale of Property	-	-	69,362	69,362
Intergovernmental Revenue	12,500	12,500	13,000	500
Total Revenues	<u>1,311,014</u>	<u>1,311,014</u>	<u>1,591,269</u>	<u>280,255</u>
EXPENDITURES:				
Current:				
Administrative and General				
Personnel	54,650	54,650	66,003	(11,353)
Maintenance	14,900	14,900	13,478	1,422
Supplies	7,200	7,200	6,812	388
Utilities	13,000	13,000	12,373	627
Operational Expenses	72,650	72,650	216,827	(144,177)
Special Services	30,000	30,000	30,217	(217)
	<u>192,400</u>	<u>192,400</u>	<u>345,710</u>	<u>(153,310)</u>
Police Department				
Personnel	652,750	652,750	675,576	(22,826)
Maintenance	25,800	25,800	25,665	135
Supplies	34,400	34,400	31,114	3,286
Utilities	14,050	14,050	13,024	1,026
Operational Expenses	46,100	46,100	45,154	946
	<u>773,100</u>	<u>773,100</u>	<u>790,533</u>	<u>(17,433)</u>
Fire Department				
Personnel	1,280	1,280	1,529	(249)
Maintenance	15,500	15,500	10,221	5,279
Supplies	10,000	10,000	9,576	424
Utilities	5,500	5,500	4,173	1,327
Operational Expenses	37,900	37,900	30,598	7,302
	<u>70,180</u>	<u>70,180</u>	<u>56,097</u>	<u>14,083</u>

CITY OF EAGLE LAKE, TEXAS

STATEMENT OF REVENUES, EXPENDITURES AND CHANGES IN FUND BALANCE

BUDGET AND ACTUAL - GENERAL FUND

YEAR ENDED SEPTEMBER 30, 2016

	Budget Amounts		Actual	Variance With
	Original	Final	Amounts	Final Budget Positive or (Negative)
Street Department				
Personnel	199,720	199,720	217,033	(17,313)
Maintenance	60,100	60,100	19,778	40,322
Supplies	17,200	17,200	16,429	771
Operational Expenses	35,300	35,300	32,161	3,139
Special Services	300	300	-	300
	<u>312,620</u>	<u>312,620</u>	<u>285,401</u>	<u>27,219</u>
Airport Department				
Personnel	22,810	22,810	12,503	10,307
Maintenance	4,100	4,100	3,477	623
Supplies	1,800	1,800	673	1,127
Utilities	7,100	7,100	5,539	1,561
Operational Expenses	4,400	4,400	5,401	(1,001)
	<u>40,210</u>	<u>40,210</u>	<u>27,593</u>	<u>12,617</u>
Parks and Recreation Department				
Personnel	73,170	73,170	57,354	15,816
Maintenance	13,700	13,700	12,576	1,124
Supplies	6,650	6,650	8,408	(1,758)
Utilities	13,400	13,400	20,669	(7,269)
Operational Expenses	12,700	12,700	13,225	(525)
	<u>119,620</u>	<u>119,620</u>	<u>112,232</u>	<u>7,388</u>
Capital Outlay	53,365	53,365	151,074	(97,709)
Debt Service				
Principal	-	-	30,453	(30,453)
Interest	-	-	951	(951)
	<u>-</u>	<u>-</u>	<u>31,404</u>	<u>(31,404)</u>
Total Expenditures	<u>1,561,495</u>	<u>1,561,495</u>	<u>1,800,044</u>	<u>(238,549)</u>
Excess (Deficiency) of Revenues over (under) Expenditures	(250,481)	(250,481)	(208,775)	41,706
OTHER FINANCING SOURCES (USES):				
Capitalized Lease	-	-	87,208	87,208
Transfers In (Out)	150,000	150,000	218,698	68,698
Total Other Financing Sources (Uses)	<u>150,000</u>	<u>150,000</u>	<u>305,906</u>	<u>155,906</u>
Net Change	(100,481)	(100,481)	97,131	197,612
Fund Balance - October 1 (Beginning)	534,289	534,289	534,289	-
Fund Balance - September 30 (Ending)	<u>\$ 433,808</u>	<u>\$ 433,808</u>	<u>\$ 631,420</u>	<u>\$ 197,612</u>

CITY OF EAGLE LAKE, TEXAS

STATEMENT OF REVENUES, EXPENDITURES AND CHANGES IN

FUND BALANCES - BUDGET AND ACTUAL - CONTINGENCY SPECIAL REVENUE FUND

FOR THE YEAR ENDED SEPTEMBER 30, 2016

	Budget Amounts		Actual	Variance With
	Original	Final	Amounts	Final Budget
				Positive or
				(Negative)
Revenues				
Interest Income	\$ 500	\$ 500	\$ 502	\$ 2
Total Revenues	500	500	502	2
Expenditures				
Administrative and General	-	-	-	-
Total Expenditures	-	-	-	-
Excess (Deficiency) of Revenues Over (Under) Expenditures	500	500	502	2
Other Financing Sources (Uses)				
Transfers In (Out)	6,000	6,000	6,000	-
Total Other Financing Sources (Uses)	6,000	6,000	6,000	-
Net Change in Fund Balance	6,500	6,500	6,502	2
Fund Balance, Beginning of Year	341,776	341,776	341,776	-
Fund Balance, End of Year	\$ 348,276	\$ 348,276	\$ 348,278	\$ 2

CITY OF EAGLE LAKE, TEXAS
TEXAS MUNICIPAL RETIREMENT SYSTEM
SCHEDULE OF CHANGES IN NET PENSION LIABILITY AND RELATED RATIOS
TEXAS MUNICIPAL RETIREMENT SYSTEM
LAST TEN FISCAL YEARS*

	2015	2016
Total pension liability		
Service cost	\$ 124,454	\$ 157,013
Interest (on the Total Pension Liability)	232,702	258,827
Changes of benefit terms	-	-
Difference between expected and actual experience	153,135	107,090
Changes of assumptions	-	64,249
Benefit payments, including refunds of employee contributions	(132,157)	(174,555)
Net change in total pension liability	378,134	412,624
Total pension liability - beginning	\$ 3,328,169	\$ 3,706,303
Total pension liability - ending (a)	<u>\$ 3,706,303</u>	<u>\$ 4,118,927</u>
Plan fiduciary net position		
Contributions - employer	\$ 68,518	\$ 85,074
Contributions - employee	66,201	72,301
Net investment income	199,357	5,437
Benefit payments, including refunds of employee contributions	(132,157)	(174,555)
Administrative expense	(2,081)	(3,311)
Other	(171)	(165)
Net change in plan fiduciary net position	\$ 199,667	\$ (15,219)
Plan fiduciary net position - beginning	<u>3,484,796</u>	<u>3,684,463</u>
Plan fiduciary net position - ending(b)	<u>\$ 3,684,463</u>	<u>\$ 3,669,244</u>
Net pension liability (a) - (b)	<u>\$ 21,840</u>	<u>\$ 449,683</u>
Plan fiduciary net position as a percentage of the total pension liability	99.41%	89.08%
Covered employee payroll	\$ 1,103,349	\$ 1,205,012
Net pension liability as a percentage of covered employee payroll	1.98%	37.32%

* This schedule is presented to illustrate the requirement to show information for 10 years. However, until a full 10-year trend is compiled, this schedule provides the information only for those years for which information is available.

CITY OF EAGLE LAKE, TEXAS
SCHEDULE OF CONTRIBUTIONS
TEXAS MUNICIPAL RETIREMENT SYSTEM
LAST TEN FISCAL YEARS*

	2015	2016
Actuarially determined contribution	\$ 68,518	\$ 85,074
Contributions in relation to the actuarially determined contribution	(68,518)	(85,074)
Contribution deficiency (excess)	\$ -	\$ -
Covered-employee payroll	\$ 1,103,349	\$ 1,205,012
Contributions as a percentage of covered-employee payroll	6.21%	7.06%

NOTES TO SCHEDULE OF CONTRIBUTIONS:

Texas Municipal Retirement System

Valuation Date:

Actuarially determined contribution rates are calculated as of December 31 and become effective in January 13 months later.

Methods and Assumptions Used to Determine Contribution Rates:

Actuarial Cost Method	Entry Age Normal
Amortization Method	Level Percentage of Payroll, Closed
Remaining Amortization Period	25 years
Asset Valuation Method	10 Year smoothed market; 15% soft corridor
Inflation	2.50%
Salary Increases	3.50% to 10.5% including inflation
Investment Rate of Return	6.75%
Retirement Age	Experience-based table of rates that are specific to the City's plan of benefits. Last updated for the 2015 valuation pursuant to an experience study of the period 2010-2014
Mortality	RP2000 Combined Mortality Table with Blue Collar Adjustment with male rates multiplied by 109% and female rates multiplied by 103% and projected on a fully generational basis with scale BB
<u>Other Information</u>	There were no benefit changes during the year.

* This schedule is presented to illustrate the requirement to show information for 10 years. However, until a full 10-year trend is compiled, this schedule provides the information only for those years for which information is available.

CITY OF EAGLE LAKE, TEXAS
NOTES TO REQUIRED SUPPLEMENTARY INFORMATION
FOR THE YEAR ENDED SEPTEMBER 30, 2015

Budget

The official budget was prepared for adoption for all Governmental Fund Types. The budget was prepared in accordance with accounting practices generally accepted in the United States of America. The following procedures are followed in establishing the budgetary data:

- a. Prior to the end of the current fiscal year, the City prepares a budget for the next succeeding fiscal year. The operating budget includes proposed expenditures and the means of financing them.
- b. A meeting of the City Council is then called for the purpose of adopting the proposed budget after ten days' public notice of the meeting has been given.
- c. Prior to the beginning of the fiscal year, the budget is legally enacted through passage of a resolution by the City Council.

Once a budget is approved, it can be amended at department and fund level only by approval of a majority of the members of the City Council. Amendments are presented to the Council at its regular meetings.

Each amendment must have Council approval. Such amendments are made before the fact, are reflected in the official minutes of the City Council and are not made after fiscal year end as required by law.

Each amendment is controlled by the budget coordinator at the revenue and expenditure function/department level. Budgeted amounts are as amended by the City Council. All budget appropriations lapse at year end.

Encumbrances for goods or purchased services are documented by purchase orders or contracts. Under Texas law, appropriations lapse at September 30, and encumbrances outstanding at that time are to be either cancelled or appropriately provided for in the subsequent year's budget. There were no end-of-year outstanding encumbrances that were provided for in the subsequent year's budget.

Defined Benefit Pension Plan

Changes of benefit terms

There were no changes of benefit terms that affected measurement of the total pension liability during the measurement period.

Changes of assumptions

There were no changes of assumptions or other inputs that affected measurement of the total pension liability during the measurement period.

This page left blank intentionally.

COMBINING AND INDIVIDUAL FUND SCHEDULES

This page left blank intentionally.

Nonmajor Governmental Funds

Special Revenue Funds

Special revenue funds are used to account for specific revenues that are legally restricted to expenditures for particular purposes.

Airport Fund – This fund is used to account for the City's revenues and expenditures related to the operation of its airport.

Chapter 59 Seizures Fund – This fund is used to account for forfeitures awarded as part of Article 59.06 of the Code of Criminal Procedure and may be expended solely for law enforcement purposes.

TDHCA HOME Fund – This fund is used to account for the HOME Program's revenues and expenditures in serving the housing needs of Texans with a primary focus on rural Texas.

Capital Project Funds

Capital project funds are used to account for the acquisition and construction of major capital facilities other than those financed by proprietary funds.

Airport Construction Fund – This fund is used to account for construction costs to rehabilitate various aspects of the municipal airport. Grant funds from the Texas Department of Transportation will fund the majority of the costs.

This page left blank intentionally.

CITY OF EAGLE LAKE, TEXAS
COMBINING BALANCE SHEET
NONMAJOR GOVERNMENTAL FUNDS
SEPTEMBER 30, 2016

	Airport	Chapter 59 Seizures	TDHCA Home	Total Nonmajor Governmental Funds
Assets				
Cash and Cash Equivalents	\$ 96,935	\$ 1,589	\$ -	\$ 98,524
Total Assets	<u>\$ 96,935</u>	<u>\$ 1,589</u>	<u>\$ -</u>	<u>\$ 98,524</u>
Liabilities				
Due to Other Funds	\$ 20,499	\$ -	\$ -	\$ 20,499
Total Liabilities	<u>20,499</u>	<u>-</u>	<u>-</u>	<u>20,499</u>
Fund Balance				
Restricted Fund Balances:				
Other Restrictions of Fund Balance	-	1,589	-	1,589
Unassigned	<u>76,436</u>	<u>-</u>	<u>-</u>	<u>76,436</u>
Total Fund Balances	<u>76,436</u>	<u>1,589</u>	<u>-</u>	<u>78,025</u>
Total Liabilities and Fund Balances	<u>\$ 96,935</u>	<u>\$ 1,589</u>	<u>\$ -</u>	<u>\$ 98,524</u>

This page left blank intentionally.

CITY OF EAGLE LAKE, TEXAS

**COMBINING STATEMENT OF REVENUES, EXPENDITURES AND CHANGES IN
FUND BALANCES - NONMAJOR GOVERNMENTAL FUNDS
FOR THE YEAR ENDED SEPTEMBER 30, 2016**

	Airport	Chapter 59 Seizures	TDHCA Home	Total Nonmajor Governmental Funds
Revenues				
Use of Property	\$ 80,738	\$ -	\$ -	\$ 80,738
Grant Revenue	-	-	97,592	97,592
Miscellaneous	11,068	-	-	11,068
Total Revenues	91,806	-	97,592	189,398
Expenditures				
General Government	36,073	100	98,487	134,660
Capital Outlay	36,923	-	-	36,923
Debt Service:				
Principal	9,540	-	-	9,540
Interest	210	-	-	210
Total Expenditures	82,746	100	98,487	181,333
Excess of Revenues Over Expenditures	9,060	(100)	(895)	8,065
Other Financing Sources (Uses)				
Capitalized lease	27,349	-	-	27,349
Transfers In (Out)	-	-	895	895
Total Other Financing Sources (Uses)	27,349	-	895	28,244
Net Change in Fund Balance	36,409	(100)	-	36,309
Fund Balance, Beginning of Year	40,027	1,689	-	41,716
Fund Balance, End of Year	\$ 76,436	\$ 1,589	\$ -	\$ 78,025

CITY OF EAGLE LAKE, TEXAS

**COMBINING STATEMENT OF REVENUES, EXPENDITURES AND CHANGES IN
FUND BALANCES - BUDGET AND ACTUAL - NONMAJOR GOVERNMENTAL FUNDS
FOR THE YEAR ENDED SEPTEMBER 30, 2016**

	Airport			Chapter 59 Seizures		
	Original and Final Budget	Actual	Variance	Original and Final Budget	Actual	Variance
Revenues						
Use of Property	\$ 78,341	\$ 80,738	\$ 2,397	\$ -	\$ -	\$ -
Grant Revenue	-	-	-	-	-	-
Miscellaneous	10,000	11,068	1,068	-	-	-
Total Revenues	88,341	91,806	3,465	-	-	-
Expenditures						
Airport Maintenance	20,000	4,500	15,500	-	-	-
Miscellaneous	31,500	31,573	(73)	-	100	(100)
Capital Outlay	30,765	36,923	(6,158)	2,000	-	2,000
Debt Service						
Principal	-	9,540	(9,540)	-	-	-
Interest	-	210	(210)	-	-	-
Total Expenditures	82,265	82,746	(481)	2,000	100	1,900
Excess (Deficiency) of Revenues Over (Under) Expenditures	6,076	9,060	2,984	(2,000)	(100)	1,900
Other Financing Sources (Uses)						
Capitalized lease	-	27,349	(27,349)	-	-	-
Transfers In (Out)	-	-	-	-	-	-
Total Other Financing Sources (Uses)	-	27,349	(27,349)	-	-	-
Net Change in Fund Balance	6,076	36,409	30,333	(2,000)	(100)	1,900
Fund Balance, Beginning of Year	40,027	40,027	-	1,689	1,689	-
Fund Balance, End of Year	\$ 46,103	\$ 76,436	\$ 30,333	\$ (311)	\$ 1,589	\$ 1,900

TDHCA Home Program			Total Nonmajor Governmental Funds		
Original and Final Budget	Actual	Variance	Original and Final Budget	Actual	Variance
\$ -	\$ -	\$ -	\$ 78,341	\$ 80,738	\$ 2,397
389,600	97,592	(292,008)	389,600	97,592	(292,008)
-	-	-	10,000	11,068	1,068
-	-	-	-	-	-
389,600	97,592	(292,008)	477,941	189,398	(288,543)
-	-	-	-	-	-
-	-	-	20,000	4,500	15,500
403,200	98,487	304,713	434,700	130,160	304,540
-	-	-	32,765	36,923	(4,158)
-	-	-	-	9,540	(9,540)
-	-	-	-	210	(210)
403,200	98,487	304,713	487,465	181,333	306,132
(13,600)	(895)	12,705	(9,524)	8,065	17,589
-	-	-	-	27,349	27,349
13,600	895	(12,705)	13,600	895	(12,705)
13,600	895	(12,705)	13,600	28,244	14,644
-	-	-	4,076	36,309	32,233
-	-	-	41,716	41,716	-
\$ -	\$ -	\$ -	\$ 45,792	\$ 78,025	\$ 32,233

CITY OF EAGLE LAKE, TEXAS
DEBT SERVICE FUND
STATEMENT OF REVENUES, EXPENDITURES AND CHANGES IN FUND
BALANCE - BUDGET AND ACTUAL
FOR THE YEAR ENDED SEPTEMBER 30, 2016

	Original and Final Budget	Actual	Variance
Revenues			
Ad valorem Taxes	\$ 232,225	\$ 241,654	\$ 9,429
Penalty and Interest	10,000	7,595	(2,405)
Interest Income	-	-	-
Total Revenues	242,225	249,249	7,024
Expenditures			
Administrative and General			
Debt Service:			
Principal	215,000	215,000	-
Interest and fees	29,457	29,457	-
Total Expenditures	244,457	244,457	-
Excess (Deficiency) of Revenues Over (Under) Expenditures	(2,232)	4,792	7,024
Other Financing Sources (Uses)			
Transfers In (Out)	-	-	-
Total Other Financing Sources (Uses)	-	-	-
Net Change in Fund Balance	(2,232)	4,792	7,024
Fund Balance, Beginning of Year	56,808	56,808	-
Fund Balance, End of Year	\$ 54,576	\$ 61,600	\$ 7,024

This page left blank intentionally.

CITY OF EAGLE LAKE, TEXAS
AIRPORT CONSTRUCTION CAPITAL PROJECT FUND
SCHEDULE OF REVENUES, EXPENDITURES AND CHANGES IN FUND
BALANCE - BUDGET AND ACTUAL
FROM INCEPTION AND FOR THE YEAR ENDED SEPTEMBER 30, 2016

	Prior Years	Current Year	Total to Date	Project Authorization
Revenues				
Intergovernmental - Texas Department of Transportation - Aviation Division	\$ 842,450	\$ -	\$ 842,450	\$ 943,956
Total Revenues	842,450	-	842,450	943,956
Expenditures				
Capital Outlay:				
Airport	936,056	-	936,056	1,048,840
Total Expenditures	936,056	-	936,056	1,048,840
Excess (Deficiency) of Revenues Over (Under) Expenditures	(93,606)	-	(93,606)	(104,884)
Other Financing Sources (Uses)				
Transfers In	101,163	-	101,163	104,884
Transfers Out	(7,557)	-	(7,557)	-
Total Other Financing Sources (Uses)	93,606	-	93,606	104,884
Net Change in Fund Balance	-	-	-	-
Fund Balance, Beginning of Year	-	-	-	-
Fund Balance, End of Year	\$ -	\$ -	\$ -	\$ -

OTHER INFORMATION REQUIRED BY GAO:

This page left blank intentionally.



TRLICEK & CO., P.C.

Certified Public Accountants

113 W. Colorado St.

P.O. Box 817

La Grange, TX 78945

(979) 968-9635

INDEPENDENT AUDITOR'S REPORT ON INTERNAL CONTROL OVER FINANCIAL REPORTING AND
ON COMPLIANCE AND OTHER MATTERS BASED ON AN AUDIT OF FINANCIAL STATEMENTS
PERFORMED IN ACCORDANCE WITH *GOVERNMENT AUDITING STANDARDS*

To the City Council
City of Eagle Lake, Texas

We have audited, in accordance with auditing standards generally accepted in the United States of America and the standards applicable to financial audits contained in *Government Auditing Standards* issued by the Comptroller General of the United States, the financial statements of the governmental activities, the business – type activities, the discretely presented component unit, each major fund, and the aggregate remaining fund information of the City of Eagle Lake, Texas, as of and for the year ended September 30, 2016, and the related notes to the financial statements, which collectively comprise the City of Eagle Lake's basic financial statements, and have issued our report thereon dated March 20, 2017.

Internal Control Over Financial Reporting

In planning and performing our audit of the financial statements, we considered the City of Eagle Lake, Texas' internal control over financial reporting (internal control) to determine the audit procedures that are appropriate in the circumstances for the purpose of expressing our opinions on the financial statements, but not for the purpose of expressing an opinion on the effectiveness of the City of Eagle Lake, Texas' internal control. Accordingly, we do not express an opinion on the effectiveness of the City of Eagle Lake, Texas' internal control.

A *deficiency in internal control* exists when the design or operation of a control does not allow management or employees, in the normal course of performing their assigned functions, to prevent, or detect and correct misstatements on a timely basis. A *material weakness* is a deficiency, or a combination of deficiencies, in internal control such that there is a reasonable possibility that a material misstatement of the entity's financial statements will not be prevented, or detected and corrected on a timely basis. A *significant deficiency* is a deficiency, or a combination of deficiencies, in internal control that is less severe than a material weakness, yet important enough to merit attention by those charged with governance.

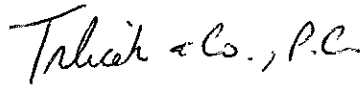
Our consideration of internal control was for the limited purpose described in the first paragraph of this section and was not designed to identify all deficiencies in internal control that might be material weaknesses or significant deficiencies. Given these limitations, during our audit we did not identify any deficiencies in internal control that we consider to be material weaknesses. However, material weaknesses may exist that have not been identified.

Compliance and Other Matters

As part of obtaining reasonable assurance about whether the City of Eagle Lake, Texas' financial statements are free of material misstatement, we performed tests of its compliance with certain provisions of laws, regulations, contracts, and grant agreements, noncompliance with which could have a direct and material effect on the determination of financial statement amounts. However, providing an opinion on compliance with those provisions was not an objective of our audit, and accordingly, we do not express such an opinion. The results of our tests disclosed no instances of noncompliance or other matters that are required to be reported under *Government Auditing Standards*.

Purpose of this Report

The purpose of this report is solely to describe the scope of our testing of internal control and compliance and the results of that testing, and not to provide an opinion on the effectiveness of the entity's internal control or on compliance. This report is an integral part of an audit performed in accordance with *Government Auditing Standards* in considering the entity's internal control and compliance. Accordingly, this communication is not suitable for any other purpose.



Trlicek & Co., P.C.
March 20, 2017